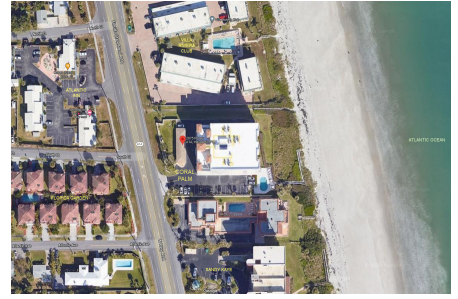


# Coral Palm

2875 N Hwy A1A, Indialantic, FL, Brevard 32903

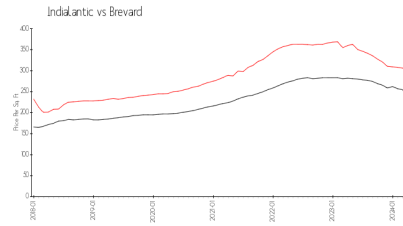
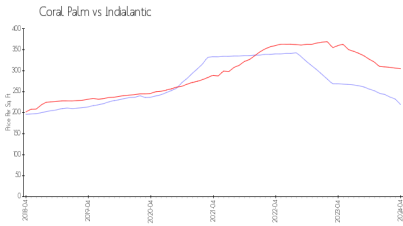
## Building Information

Number of units: 31  
 Number of active listings for rent: 0  
 Number of active listings for sale: 0  
 Building inventory for sale:  
 Number of sales over the last 12 months: 0%  
 Number of sales over the last 6 months: 0  
 Number of sales over the last 3 months: 0



Built in 2003 - 31 units - 8 floors

## Market Information



Coral Palm: \$219/sq. ft.  
 Indialantic: \$305/sq. ft.  
 Indialantic: \$305/sq. ft.  
 Brevard: \$226/sq. ft.

## Inventory for Sale

Coral Palm  
 Indialantic  
 0%%

Brevard

## Avg. Time to Close Over Last 12 Months

Coral Palm n/a  
 Indialantic 51 days  
 Brevard 39 days