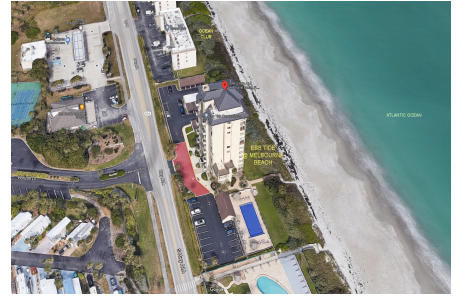


# Ebb Tide at Melbourne Beach

2999 S Hwy A1A, Melbourne Beach, FL, Brevard 32951

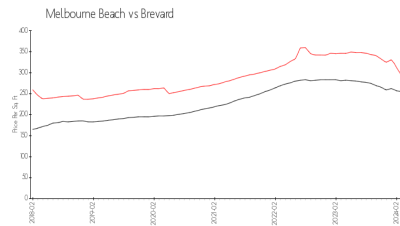
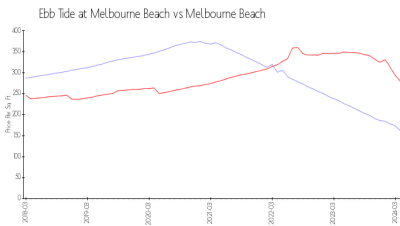
## Building Information

Number of units: 24  
 Number of active listings for rent: 0  
 Number of active listings for sale: 0  
 Building inventory for sale:  
 Number of sales over the last 12 months: 0%  
 Number of sales over the last 6 months: 0  
 Number of sales over the last 3 months: 0



Built in 1985 - 24 units - 13 floors

## Market Information



Ebb Tide at Melbourne Beach: \$161/sq. ft.  
 Melbourne Beach: \$279/sq. ft.

Melbourne Beach: \$279/sq. ft.  
 Brevard: \$226/sq. ft.

## Inventory for Sale

Ebb Tide at Melbourne Beach  
 Melbourne Beach  
 0%%

Brevard

## Avg. Time to Close Over Last 12 Months

Ebb Tide at Melbourne Beach: n/a  
 Melbourne Beach: 11 days  
 Brevard: 41 days