

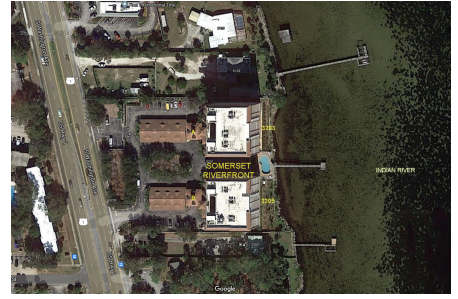
Somerset Riverfront A&B

3203 S Washington Ave, Titusville, FL, Brevard 32780

Building Information

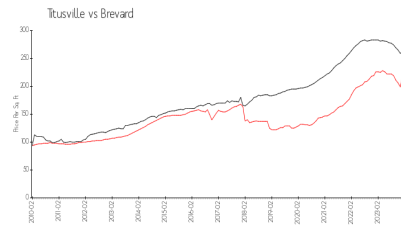
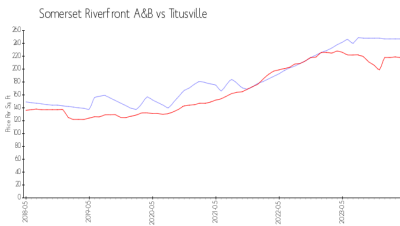
Number of units: 54
 Number of active listings for rent: 0
 Number of active listings for sale: 0
 Building inventory for sale:
 Number of sales over the last 12 months: 0%
 Number of sales over the last 6 months: 0
 Number of sales over the last 3 months: 0

Somerset Riverfront Condo Association
 Address: 3205 S Washington Ave, Titusville, FL 32780
 Phone: +1 321-267-5628



Built in 2006 - 54 units - 10 floors

Market Information



Somerset Riverfront A&B: \$247/sq. ft.
 Titusville: \$218/sq. ft.

Titusville: \$218/sq. ft.
 Brevard: \$226/sq. ft.

Inventory for Sale

Somerset Riverfront A&B
 Titusville
 0%%

Brevard

Avg. Time to Close Over Last 12 Months

Somerset Riverfront A&B: 20 days
 Titusville: 28 days
 Brevard: 39 days