

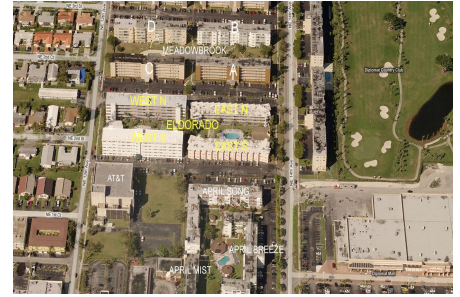
# Eldorado Plaza East (North & South)

181 NE 14 Av, Hallandale Beach, FL, Broward 33009

## Building Information

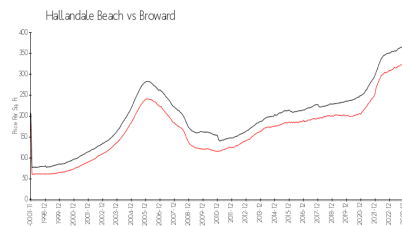
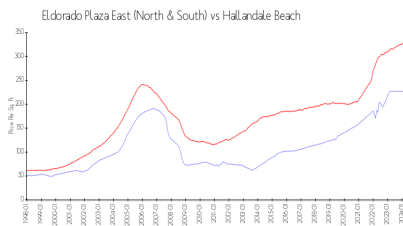
Number of units: 72  
 Number of active listings for rent: 2  
 Number of active listings for sale: 4  
 Building inventory for sale: 5%  
 Number of sales over the last 12 months: 2  
 Number of sales over the last 6 months: 1  
 Number of sales over the last 3 months: 1

Eldorado Plaza East Condo Association  
 181-201 Ne 14th Ave.  
 Hallandale Beach, FL



Built in 1968 - 72 units - 3 floors

## Market Information



Eldorado Plaza East (North & South): \$212/sq. ft.  
 Hallandale Beach: \$325/sq. ft.

Hallandale Beach: \$325/sq. ft.  
 Broward: \$351/sq. ft.

## Inventory for Sale

Eldorado Plaza East (North & South): 5%  
 Hallandale Beach: 4%  
 Broward: 4%

## Avg. Time to Close Over Last 12 Months

Eldorado Plaza East (North & South): 145 days  
 Hallandale Beach: 76 days  
 Broward: 67 days