

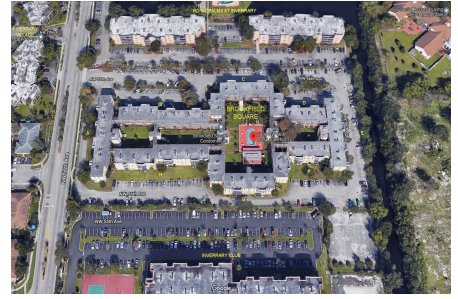
# Brookfield Square

2800 NW 56 Ave, Lauderhill, FL, Broward 33313

## Building Information

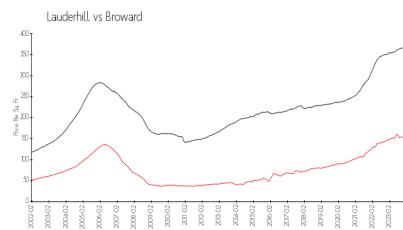
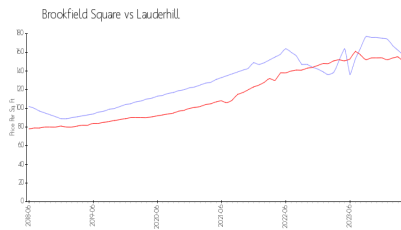
Number of units:	200
Number of active listings for rent:	5
Number of active listings for sale:	18
Building inventory for sale:	9%
Number of sales over the last 12 months:	8
Number of sales over the last 6 months:	3
Number of sales over the last 3 months:	0

Brookfield Square Condominium  
Address: 2800 NW 56th Ave,  
Lauderhill, FL 33313  
Phone: +1 954-714-0010



Built in 1979 - 200 units - 4 floors

## Market Information



Brookfield Square: \$157/sq. ft.  
Lauderhill: \$150/sq. ft.

Lauderhill: \$150/sq. ft.  
Broward: \$351/sq. ft.

## Inventory for Sale

Brookfield Square	9%
Lauderhill	5%
Broward	4%

## Avg. Time to Close Over Last 12 Months

Brookfield Square	91 days
Lauderhill	74 days
Broward	67 days