

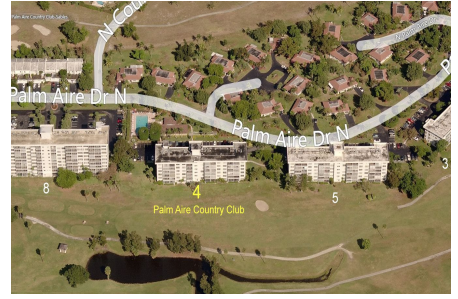
Palm Aire 4

3000 N Palm Aire Dr, Pompano Beach, FL, Broward 33069

Building Information

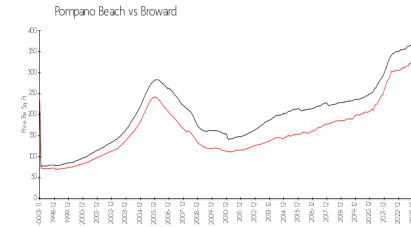
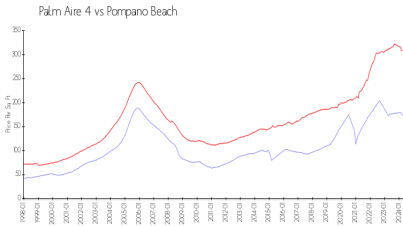
Number of units:	42
Number of active listings for rent:	0
Number of active listings for sale:	5
Building inventory for sale:	11%
Number of sales over the last 12 months:	1
Number of sales over the last 6 months:	1
Number of sales over the last 3 months:	0

Mwi/Campbell Management Co, Palm Aire Country Club Condominium Association
 3500 Gateway Drive # 202
 Pompano Beach, FL 33069-4870
 (954) 968-4481



Built in 1969 - 42 units - 6 floors

Market Information



Palm Aire 4: \$173/sq. ft.
 Pompano Beach: \$308/sq. ft.

Pompano Beach: \$308/sq. ft.
 Broward: \$351/sq. ft.

Inventory for Sale

Palm Aire 4	11%
Pompano Beach	3%
Broward	4%

Avg. Time to Close Over Last 12 Months

Palm Aire 4	58 days
Pompano Beach	73 days
Broward	67 days