

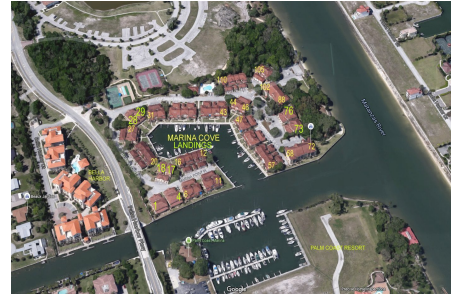
# Marina Cove Landings

1 Marina Point Pl, Palm Coast, FL, Flagler 32137

## Building Information

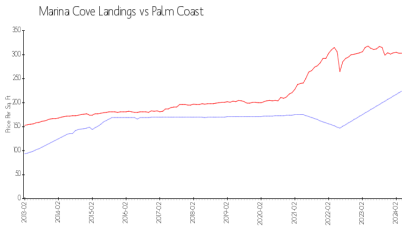
Number of units: 12  
 Number of active listings for rent: 0  
 Number of active listings for sale: 0  
 Building inventory for sale:  
 Number of sales over the last 12 months: 0%%  
 Number of sales over the last 6 months: 2  
 Number of sales over the last 3 months: 1

Marina Cove Landings  
 Condominium Association Inc  
 1410 Palm Coast Pkwy Nw  
 Palm Coast, Florida 32137-4721

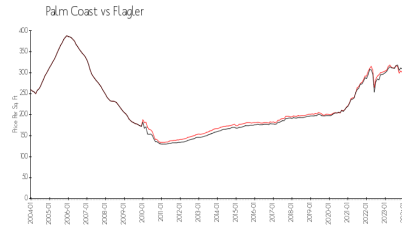


Built in 2004 - 12 units - 2 floors

## Market Information



Marina Cove Landings: \$224/sq. ft.  
 Palm Coast: \$303/sq. ft.



Palm Coast: \$303/sq. ft.  
 Flagler: \$346/sq. ft.

## Inventory for Sale

Marina Cove Landings  
 Palm Coast  
 0%%

Flagler

## Avg. Time to Close Over Last 12 Months

Marina Cove Landings 35 days  
 Palm Coast 73 days  
 Flagler 72 days