

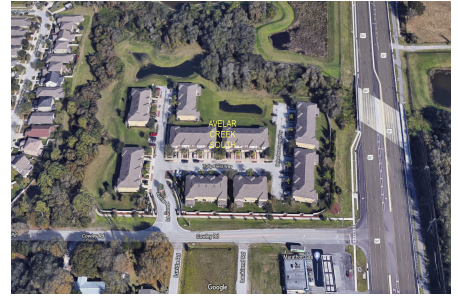
# Avelar Creek South

10402-10424 Tulip Field Wy, Riverview, FL, Hillsborough 33578

## Building Information

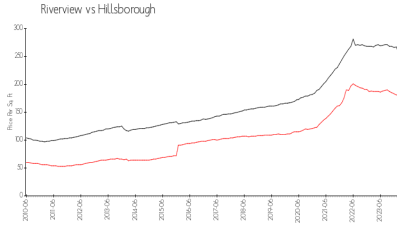
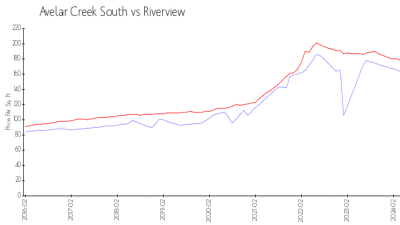
Number of units:	48
Number of active listings for rent:	0
Number of active listings for sale:	1
Building inventory for sale:	2%
Number of sales over the last 12 months:	2
Number of sales over the last 6 months:	0
Number of sales over the last 3 months:	0

Avelar Creek South Homeowners  
 The Melrose Management Partnership  
 3527 Palm Harbor Blvd  
 Palm Harbor, FL 34683  
 727-787-3461 (phone)  
<https://melrosecorporation.com/avelar-creek-south/>



Built in 2012 - 48 units - 2 floors

## Market Information



Avelar Creek South: \$163/sq. ft.  
 Riverview: \$178/sq. ft.

Riverview: \$178/sq. ft.  
 Hillsborough: \$251/sq. ft.

## Inventory for Sale

Avelar Creek South	2%
Riverview	2%
Hillsborough	2%

## Avg. Time to Close Over Last 12 Months

Avelar Creek South	35 days
Riverview	43 days
Hillsborough	43 days