

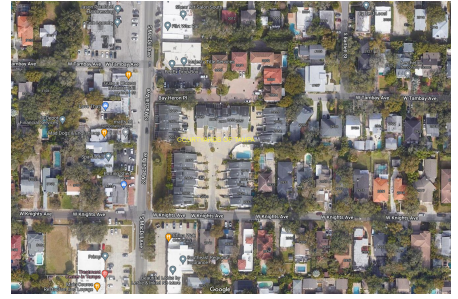
# Courtyards of Tampa

2937 W Knight Ave, Tampa, FL, Hillsborough 33611

## Building Information

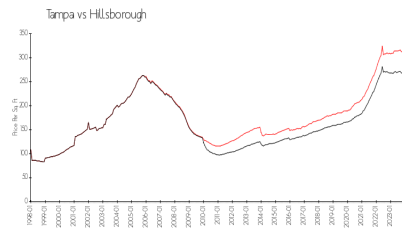
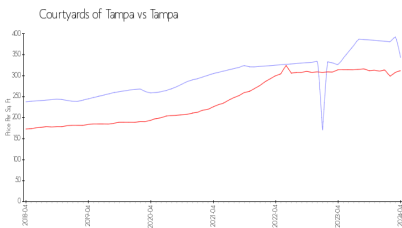
Number of units:	25
Number of active listings for rent:	0
Number of active listings for sale:	1
Building inventory for sale:	4%
Number of sales over the last 12 months:	2
Number of sales over the last 6 months:	1
Number of sales over the last 3 months:	1

THE COURTYARDS OF TAMPA  
CONDOMINIUM ASSOCIATION, INC.  
2985 W. Knights Avenue,  
Tampa, FL, 33611



Built in 1985 - 25 units - 2 floors

## Market Information



Courtyards of Tampa: \$343/sq. ft.  
Tampa: \$312/sq. ft.

Tampa: \$312/sq. ft.  
Hillsborough: \$251/sq. ft.

## Inventory for Sale

Courtyards of Tampa	4%
Tampa	2%
Hillsborough	2%

## Avg. Time to Close Over Last 12 Months

Courtyards of Tampa	45 days
Tampa	43 days
Hillsborough	44 days