

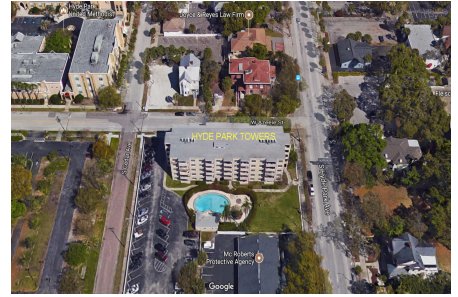
Hyde Park Towers

406 W Azelee St, Tampa, FL, Hillsborough 33606

Building Information

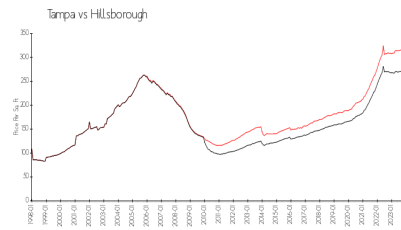
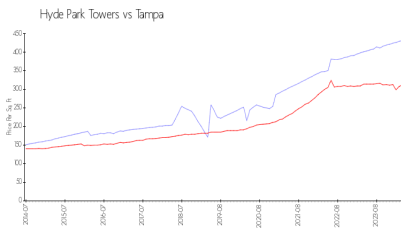
Number of units:	40
Number of active listings for rent:	0
Number of active listings for sale:	1
Building inventory for sale:	2%
Number of sales over the last 12 months:	3
Number of sales over the last 6 months:	1
Number of sales over the last 3 months:	1

HYDE PARK TOWERS
 CONDOMINIUM ASSOCIATION, INC.
 C/O Condominium Associates
 777 S Harbour Island Blvd, Suite 270
 Tampa, FL 33602
 (813) 209-9300



Built in 1963 - 40 units - 5 floors

Market Information



Hyde Park Towers: \$431/sq. ft.
 Tampa: \$312/sq. ft.

Tampa: \$312/sq. ft.
 Hillsborough: \$251/sq. ft.

Inventory for Sale

Hyde Park Towers	2%
Tampa	2%
Hillsborough	2%

Avg. Time to Close Over Last 12 Months

Hyde Park Towers	73 days
Tampa	43 days
Hillsborough	44 days