

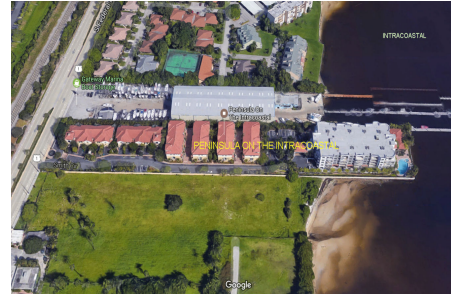
# Peninsula on the Intracoastal

2670-2700 N Federal Hwy, Boynton Beach, FL, Palm Beach 33435

## Building Information

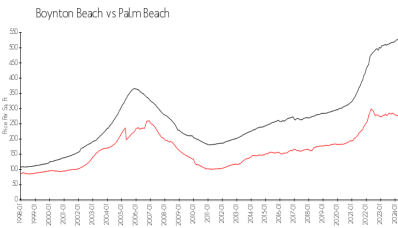
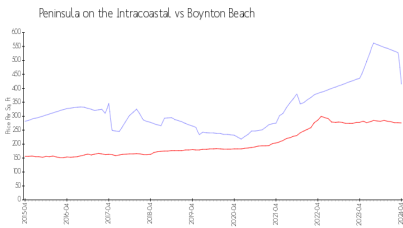
Number of units: 70  
 Number of active listings for rent: 0  
 Number of active listings for sale: 4  
 Building inventory for sale: 5%  
 Number of sales over the last 12 months: 3  
 Number of sales over the last 6 months: 2  
 Number of sales over the last 3 months: 2

Peninsula on the Intracoastal  
 561-740-3400  
<http://peninsulaboynnton.com/>



Built in 2011 - 70 units - 5 floors

## Market Information



Peninsula on the Intracoastal: \$414/sq. ft.  
 Boynton Beach: \$276/sq. ft.

Boynton Beach: \$276/sq. ft.  
 Palm Beach: \$475/sq. ft.

## Inventory for Sale

Peninsula on the Intracoastal: 5%  
 Boynton Beach: 2%  
 Palm Beach: 3%

## Avg. Time to Close Over Last 12 Months

Peninsula on the Intracoastal: 1 days  
 Boynton Beach: 48 days  
 Palm Beach: 56 days