

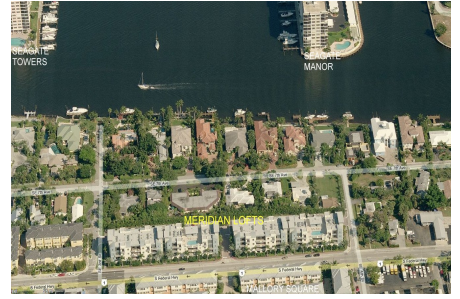
Meridian

335 SE 6 Av, Delray Beach, FL, Palm Beach 33483

Building Information

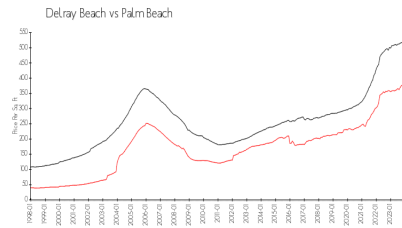
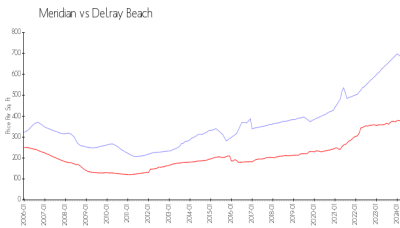
Number of units: 59
 Number of active listings for rent: 3
 Number of active listings for sale: 2
 Building inventory for sale: 3%
 Number of sales over the last 12 months: 5
 Number of sales over the last 6 months: 4
 Number of sales over the last 3 months: 2

Meridian Delray Condominium Association, Inc
 3082 S Jog Road, Greenacres, FL33467
 (561) 278-4666



Built in 2006 - 59 units - 4 floors

Market Information



Meridian: \$679/sq. ft.
 Delray Beach: \$371/sq. ft.

Delray Beach: \$371/sq. ft.
 Palm Beach: \$475/sq. ft.

Inventory for Sale

Meridian 3%
 Delray Beach 3%
 Palm Beach 3%

Avg. Time to Close Over Last 12 Months

Meridian 73 days
 Delray Beach 54 days
 Palm Beach 56 days