

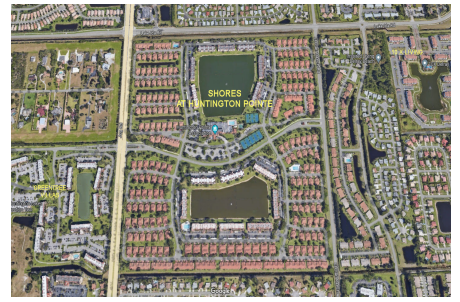
# Shores at Huntington Pointe

5015-6160 Waldwick Cir, Delray Beach, FL, Palm Beach 33484

## Building Information

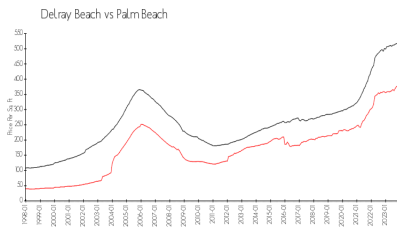
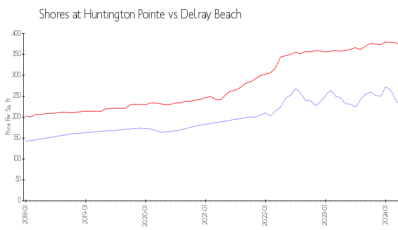
Number of units: 520  
 Number of active listings for rent: 0  
 Number of active listings for sale: 0  
 Building inventory for sale:  
 Number of sales over the last 12 months: 0%  
 Number of sales over the last 6 months: 1  
 Number of sales over the last 3 months: 0

Huntington Pointe  
 Association Inc  
 6251 North Oriole Boulevard  
 Delray Beach, FL 33484  
 (561) 496-3801  
<https://huntingtonpointe.net/>



Built in 1989/1992 - 520 units 1 floor

## Market Information



Shores at Huntington Pointe: \$227/sq. ft.  
 Delray Beach: \$371/sq. ft.

Delray Beach: \$371/sq. ft.  
 Palm Beach: \$475/sq. ft.

## Inventory for Sale

Shores at Huntington Pointe  
 Delray Beach  
 0%  
 Palm Beach

## Avg. Time to Close Over Last 12 Months

Shores at Huntington Pointe: 52 days  
 Delray Beach: 54 days  
 Palm Beach: 56 days