

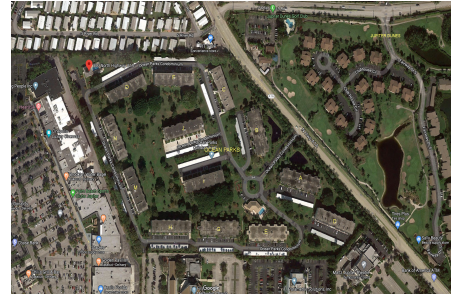
Ocean Parks (A to O)

300 N Highway A1A, Jupiter, FL, Palm Beach 33477

Building Information

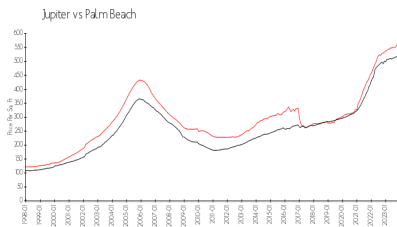
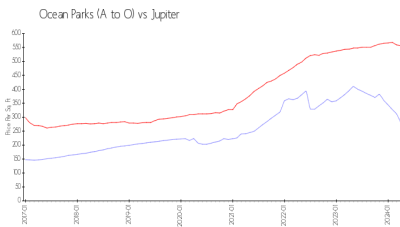
Number of units:	328
Number of active listings for rent:	6
Number of active listings for sale:	12
Building inventory for sale:	3%
Number of sales over the last 12 months:	9
Number of sales over the last 6 months:	6
Number of sales over the last 3 months:	3

Ocean Parks Office
 300 N. Ocean Blvd (Hwy. A1A)
 Jupiter, FL 33477-9510
 (561) 744-0668
 (561) 575-2874 (fax)
<https://www.oceanparks.com/>



Built in 1973/1981 - 328 units - 4 floors

Market Information



Ocean Parks (A to O): \$278/sq. ft.
 Jupiter: \$557/sq. ft.

Jupiter: \$557/sq. ft.
 Palm Beach: \$475/sq. ft.

Inventory for Sale

Ocean Parks (A to O)	3%
Jupiter	3%
Palm Beach	3%

Avg. Time to Close Over Last 12 Months

Ocean Parks (A to O)	68 days
Jupiter	65 days
Palm Beach	56 days