

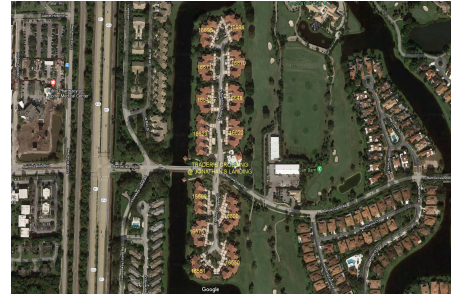
# Trader's Crossing at Jonathan's Landing

16695 Traders Xing N, Jupiter, FL, Palm Beach 33477

## Building Information

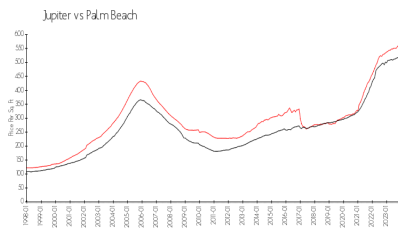
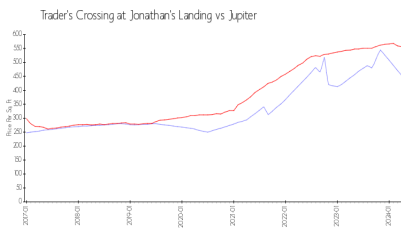
Number of units: 110  
 Number of active listings for rent: 2  
 Number of active listings for sale: 2  
 Building inventory for sale: 1%  
 Number of sales over the last 12 months: 9  
 Number of sales over the last 6 months: 3  
 Number of sales over the last 3 months: 3

Jonathan's Landing POA  
 3755 Barrow Island Road  
 Jupiter, FL 33477  
 Property Management  
 Coastal Community Association Mgmt  
 909 SE Central Parkway,  
 Stuart, FL 34994  
 (772) 286-0030  
<https://jonathanslandingpoa.com/the-villages/traders-crossing>



Built in 1988 - 110 units - 2 floors

## Market Information



|  |               |             |               |
|--|---------------|-------------|---------------|
| Trader's Crossing at Jonathan's Landing: | \$452/sq. ft. | Jupiter:    | \$557/sq. ft. |
| Jupiter:                                 | \$557/sq. ft. | Palm Beach: | \$475/sq. ft. |

## Inventory for Sale

|   |    |
|---|----|
| Trader's Crossing at Jonathan's Landing | 1% |
| Jupiter                                 | 3% |
| Palm Beach                              | 3% |

## Avg. Time to Close Over Last 12 Months

|   |         |
|---|---------|
| Trader's Crossing at Jonathan's Landing | 25 days |
| Jupiter                                 | 65 days |
| Palm Beach                              | 56 days |