

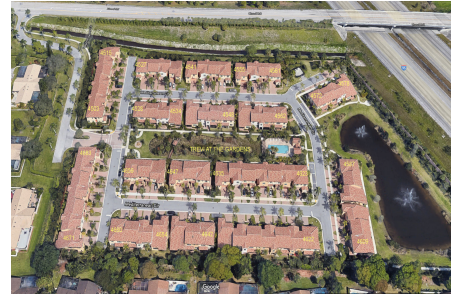
Trevi at the Gardens

4503-4683 Mediterranean Cir, Palm Beach Gardens, FL, Palm Beach 33418

Building Information

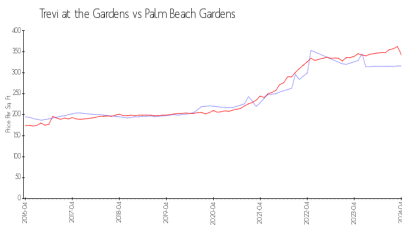
Number of units:	75
Number of active listings for rent:	1
Number of active listings for sale:	5
Building inventory for sale:	6%
Number of sales over the last 12 months:	3
Number of sales over the last 6 months:	1
Number of sales over the last 3 months:	1

Trevi at the Gardens HOA
 Address 4580 Mediterranean Cir
 Palm Beach Gardens, FL33418
 Phone +1 561-249-0489

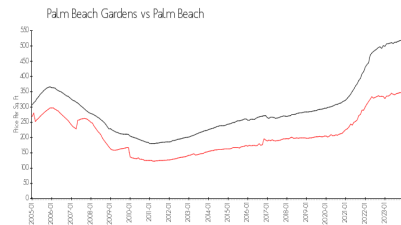


Built in 2013 - 75 units - 2 floors

Market Information



Trevi at the Gardens: \$316/sq. ft.
 Palm Beach Gardens: \$342/sq. ft.



Palm Beach Gardens: \$342/sq. ft.
 Palm Beach: \$475/sq. ft.

Inventory for Sale

Trevi at the Gardens	6%
Palm Beach Gardens	2%
Palm Beach	3%

Avg. Time to Close Over Last 12 Months

Trevi at the Gardens	51 days
Palm Beach Gardens	47 days
Palm Beach	56 days