

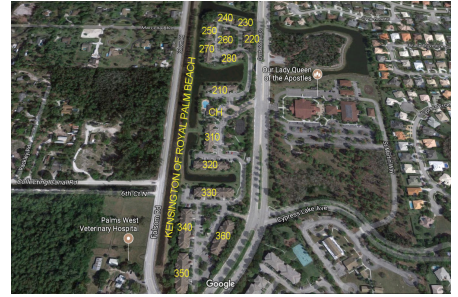
# Kensington of Royal Palm Beach

210-360 Crestwood Cir, Royal Palm Beach, FL, Palm Beach 33411

## Building Information

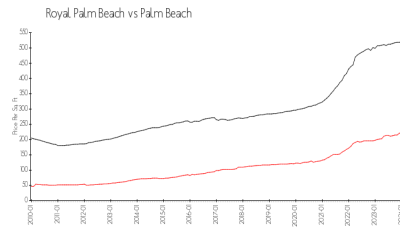
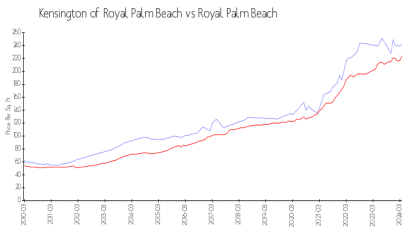
Number of units: 166  
 Number of active listings for rent: 2  
 Number of active listings for sale: 0  
 Building inventory for sale:  
 Number of sales over the last 12 months: 6%  
 Number of sales over the last 6 months: 2  
 Number of sales over the last 3 months: 0

Kensington of Royal Palm Beach  
 c/o GRS Management Associates  
 3900 Woodlake Blvd. Suite 309  
 Lake Worth, FL 33463  
 TEL: 561-641-8554  
 FAX: 561-641-9448  
<https://www.grsmgt.com/association/kensington/>



Built in 2004 - 166 units - 3 floors

## Market Information



Kensington of Royal Palm Beach: \$242/sq. ft.  
 Royal Palm Beach: \$224/sq. ft.

Royal Palm Beach: \$224/sq. ft.  
 Palm Beach: \$475/sq. ft.

## Inventory for Sale

Kensington of Royal Palm Beach  
 Royal Palm Beach  
 0%%

Palm Beach

## Avg. Time to Close Over Last 12 Months

Kensington of Royal Palm Beach: 33 days  
 Royal Palm Beach: 34 days  
 Palm Beach: 56 days