

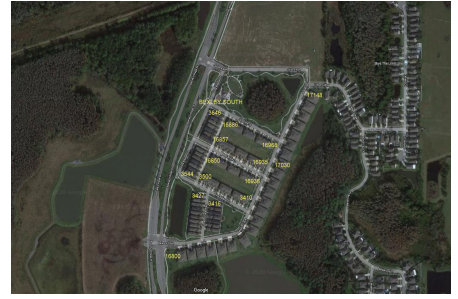
Bexley South

16885-16968 Storyline Dr, Land O Lakes, FL, Pasco 34638

Building Information

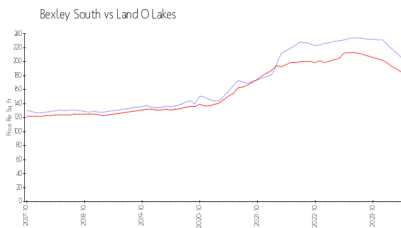
Number of units:	139
Number of active listings for rent:	0
Number of active listings for sale:	1
Building inventory for sale:	0%
Number of sales over the last 12 months:	1
Number of sales over the last 6 months:	0
Number of sales over the last 3 months:	0

Bexley by Newland
 Address: 16950 Vibrant Way,
 Land O Lakes, FL 34638
 Phone: +1 813-425-7555

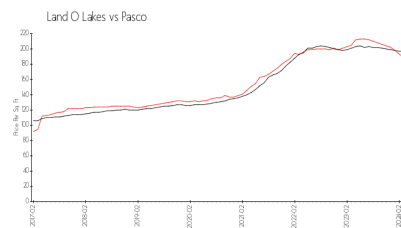


Built in 2018 - 139 units - 2 floors

Market Information



Bexley South: \$205/sq. ft.
 Land O Lakes: \$185/sq. ft.



Land O Lakes: \$185/sq. ft.
 Pasco: \$192/sq. ft.

Inventory for Sale

Bexley South	0%
Land O Lakes	1%
Pasco	1%

Avg. Time to Close Over Last 12 Months

Bexley South	13 days
Land O Lakes	38 days
Pasco	45 days