

Weatherly

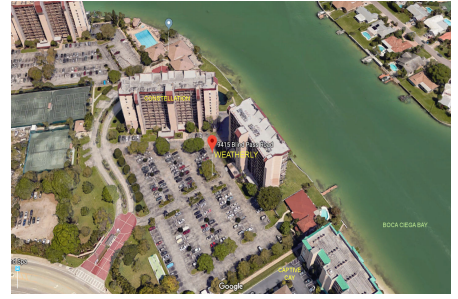
9415 Blind Pass Rd, St Pete Beach, FL, Pinellas 33706

Building Information

Number of units: 70
 Number of active listings for rent: 0
 Number of active listings for sale: 3
 Building inventory for sale: 4%
 Number of sales over the last 12 months: 2
 Number of sales over the last 6 months: 0
 Number of sales over the last 3 months: 0

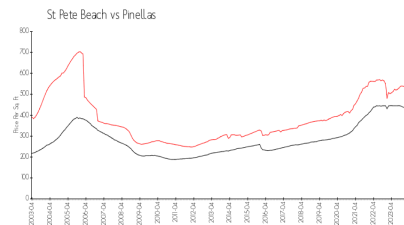
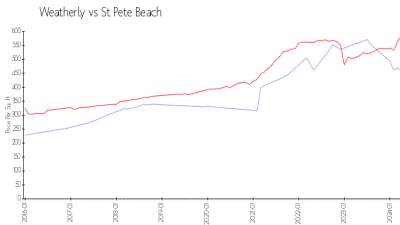
MANAGEMENT OFFICE INFORMATION

Address: 9445 Blind Pass Road,
 St. Pete Beach, FL 33706
 Phone: 727-367-5659
http://www.ytcspsb.com/ytcspsb/outside_home.asp



Built in 1977 - 70 units - 13 floors

Market Information



Weatherly: \$458/sq. ft.
 St Pete Beach: \$584/sq. ft.

St Pete Beach: \$584/sq. ft.
 Pinellas: \$419/sq. ft.

Inventory for Sale

Weatherly 4%
 St Pete Beach 3%
 Pinellas 3%

Avg. Time to Close Over Last 12 Months

Weatherly 29 days
 St Pete Beach 58 days
 Pinellas 62 days