

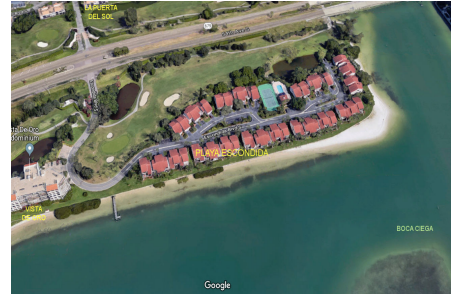
Playa Escondida

5500-5686 Escondida Blvd S, St Petersburg, FL, Pinellas 33715

Building Information

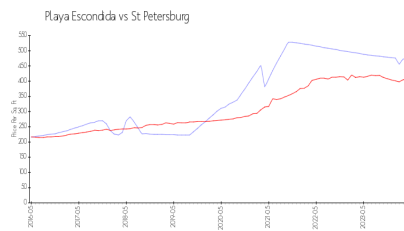
Number of units:	43
Number of active listings for rent:	0
Number of active listings for sale:	2
Building inventory for sale:	4%
Number of sales over the last 12 months:	2
Number of sales over the last 6 months:	2
Number of sales over the last 3 months:	1

Playa Escondida Condominium Association
5901 Sun Blvd Ste 200
St. Petersburg, Florida, 33715-1161

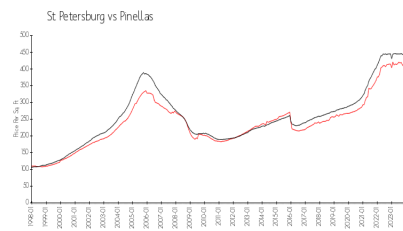


Built in 1978 - 43 units - 2 floors

Market Information



Playa Escondida: \$471/sq. ft.
St Petersburg: \$404/sq. ft.



St Petersburg: \$404/sq. ft.
Pinellas: \$419/sq. ft.

Inventory for Sale

Playa Escondida	4%
St Petersburg	4%
Pinellas	3%

Avg. Time to Close Over Last 12 Months

Playa Escondida	9 days
St Petersburg	66 days
Pinellas	62 days