

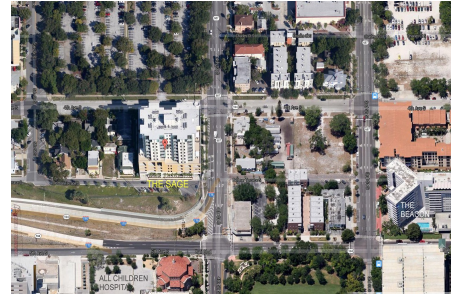
Sage

400 4 Av S, St Petersburg, FL, Pinellas 33701

Building Information

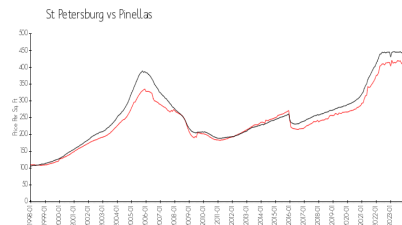
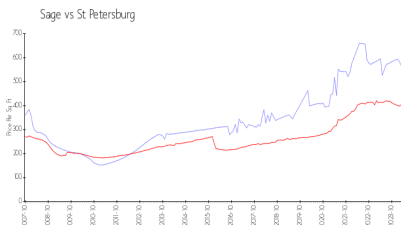
Number of units:	112
Number of active listings for rent:	1
Number of active listings for sale:	2
Building inventory for sale:	1%
Number of sales over the last 12 months:	9
Number of sales over the last 6 months:	5
Number of sales over the last 3 months:	2

The Sage Condo Association
400 4th Avenue S
Saint Petersburg, FL 33701
(727) 823-0176



Built in 2007 - 112 units - 12 floors

Market Information



Sage: \$630/sq. ft.
St Petersburg: \$404/sq. ft.

St Petersburg: \$404/sq. ft.
Pinellas: \$419/sq. ft.

Inventory for Sale

Sage	1%
St Petersburg	4%
Pinellas	3%

Avg. Time to Close Over Last 12 Months

Sage	82 days
St Petersburg	66 days
Pinellas	62 days