

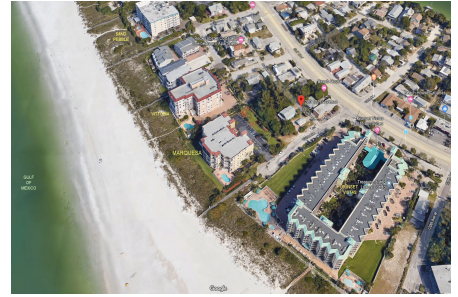
Marquesa

200 121 Ave, Treasure Island, FL, Pinellas 33706

Building Information

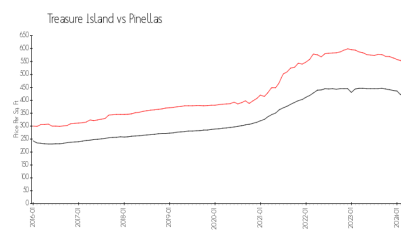
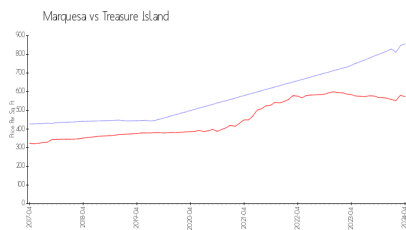
| | |
|--|----|
| Number of units: | 17 |
| Number of active listings for rent: | 0 |
| Number of active listings for sale: | 1 |
| Building inventory for sale: | 5% |
| Number of sales over the last 12 months: | 0 |
| Number of sales over the last 6 months: | 0 |
| Number of sales over the last 3 months: | 0 |

Marquesa Condominium Association
Address 200 121st Ave
Treasure Island, Florida 33706
Phone +1 727-363-4831



Built in 2000 - 38 units - 4 floors

Market Information



Marquesa: \$856/sq. ft.
Treasure Island: \$573/sq. ft.

Treasure Island: \$573/sq. ft.
Pinellas: \$419/sq. ft.

Inventory for Sale

| | |
|-----------------|----|
| Marquesa | 5% |
| Treasure Island | 4% |
| Pinellas | 3% |

Avg. Time to Close Over Last 12 Months

| | |
|-----------------|---------|
| Marquesa | 38 days |
| Treasure Island | 74 days |
| Pinellas | 62 days |