

# Unit 720 Ridge Club Dr # 43 - Ridgewood Club

720 Ridge Club Dr # 43 - 601-762 Ridge Club Dr, Melbourne, FL, Brevard 32934

## Unit Information

MLS Number: 1003333  
 Status: Active  
 Size: 900 Sq ft.  
 Bedrooms: 2  
 Full Bathrooms: 1  
 Half Bathrooms:  
 Parking Spaces: Assigned  
 View:  
 List Price: \$189,500  
 List PPSF: \$211  
 Valuated Price: \$149,000  
 Valuated PPSF: \$166

*The above valuated price is a baseline figure that does not take into account any specific renovation, upgrade, split, merge, or deterioration of the unit.*

## Building Information

Number of units: 96  
 Number of active listings for rent: 0  
 Number of active listings for sale: 1  
 Building inventory for sale: 1%  
 Number of sales over the last 12 months: 1  
 Number of sales over the last 6 months: 1  
 Number of sales over the last 3 months: 1

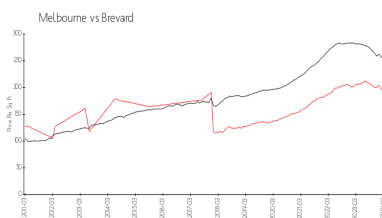
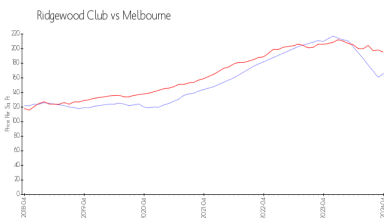
## Building Association Information

The Ridgewood Club  
 Condominium Association Inc  
 600 Ridge Club Dr  
 Melbourne, FL 32934

## Recent Sales

Unit #	Size	Closing Date	Sale Price	PPSF
79	900 sq ft	Mar 2024	\$164,500	\$183

## Market Information



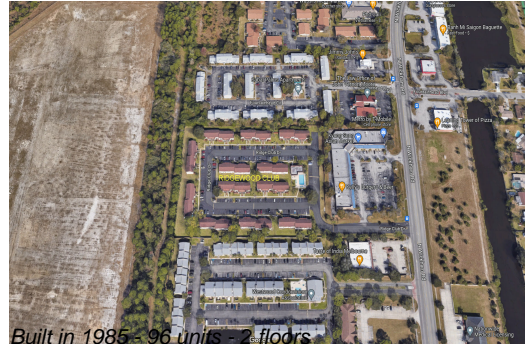
Ridgewood Club:	\$166/sq. ft.	Melbourne:	\$195/sq. ft.
Melbourne:	\$195/sq. ft.	Brevard:	\$226/sq. ft.

## Inventory for Sale

Ridgewood Club: 1%  
 Melbourne: 0%  
 Brevard: 1%

## Avg. Time to Close Over Last 12 Months

Ridgewood Club: n/a  
 Melbourne: 33 days



Brevard

39 days