

Unit 223 Columbia Dr # 319 - Plaza 221&223

223 Columbia Dr # 319 - 221 Columbia Dr, Cape Canaveral, FL, Brevard 32920

Unit Information

MLS Number: 1004423
 Status: Active
 Size: 680 Sq ft.
 Bedrooms: 1
 Full Bathrooms: 1
 Half Bathrooms:
 Parking Spaces: Parking Lot
 View:
 List Price: \$1,500
 List PPSF: \$2
 Valuated Price: \$53,000
 Valuated PPSF: \$78

The above valuated price is a baseline figure that does not take into account any specific renovation, upgrade, split, merge, or deterioration of the unit.

Building Information

Number of units: 129
 Number of active listings for rent: 0
 Number of active listings for sale: 2
 Building inventory for sale: 1%
 Number of sales over the last 12 months: 1
 Number of sales over the last 6 months: 0
 Number of sales over the last 3 months: 0

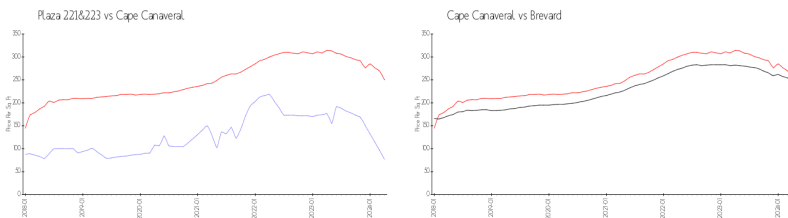
Building Association Information

Plaza Condominiums
 221 Columbia Drive Apartment 136
 Cape Canaveral, FL
 (321) 783-1007

Recent Sales

Unit #	Size	Closing Date	Sale Price	PPSF
345	1,200 sq ft	Oct 2023	\$145,000	\$121

Market Information



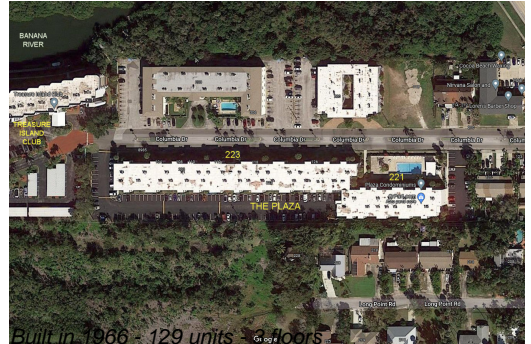
Plaza 221&223:	\$77/sq. ft.	Cape Canaveral:	\$250/sq. ft.
Cape Canaveral:	\$250/sq. ft.	Brevard:	\$226/sq. ft.

Inventory for Sale

Plaza 221&223	2%
Cape Canaveral	1%
Brevard	1%

Avg. Time to Close Over Last 12 Months

Plaza 221&223	16 days
Cape Canaveral	30 days



Brevard

39 days