

Unit 620 Beach Park Ln # V263 - Villages of Seaport (The)

620 Beach Park Ln # V263 - 100-722 Beach Park Ln, Cape Canaveral, FL, Brevard 32920

Unit Information

MLS Number: 1006058
Status: Active
Size: 640 Sq ft.
Bedrooms: 1
Full Bathrooms: 1
Half Bathrooms:
Parking Spaces: Assigned
View:
List Price: \$1,750
List PPSF: \$3
Valuated Price: \$74,000
Valuated PPSF: \$114

The above valuated price is a baseline figure that does not take into account any specific renovation, upgrade, split, merge, or deterioration of the unit.

Building Information

Number of units: 558
Number of active listings for rent: 0
Number of active listings for sale: 3
Building inventory for sale: 0%
Number of sales over the last 12 months: 4
Number of sales over the last 6 months: 3
Number of sales over the last 3 months: 3

Building Association Information

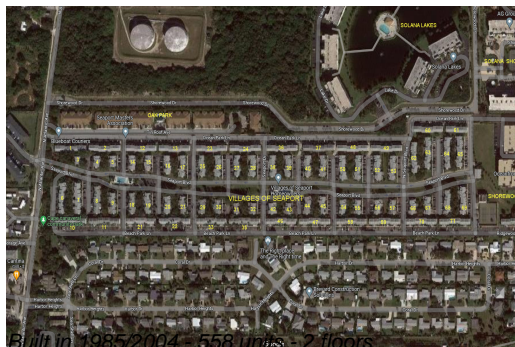
Villages of Seaport
Condominium Assoc., Inc
Association Manager
(321) 784-6400
(321) 890-4489
Assistant Manager
(321) 784-6400
(301) 643-3924
Admin
(321) 784-6400
Guard
(321) 783-8046

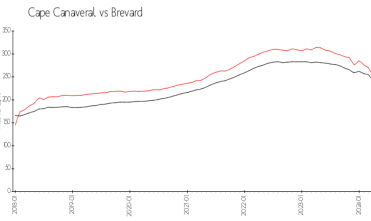
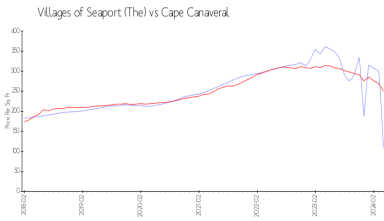
<https://www.myvos.org/>

Recent Sales

Unit #	Size	Closing Date	Sale Price	PPSF
V265	703 sq ft	Apr 2024	\$242,000	\$344
189	1,014 sq ft	Apr 2024	\$325,000	\$321
T15	1,120 sq ft	Mar 2024	\$269,000	\$240
V170	1,014 sq ft	Sep 2023	\$255,000	\$251

Market Information





Villages of Seaport (The): \$110/sq. ft.
 Cape Canaveral: \$250/sq. ft.

Cape Canaveral: \$250/sq. ft.
 Brevard: \$226/sq. ft.

Inventory for Sale

Villages of Seaport (The) 1%
 Cape Canaveral 1%
 Brevard 1%

Avg. Time to Close Over Last 12 Months

Villages of Seaport (The) 86 days
 Cape Canaveral 30 days
 Brevard 39 days