

# Unit 223 Columbia Dr # 310 - Plaza 221&223

223 Columbia Dr # 310 - 221 Columbia Dr, Cape Canaveral, FL, Brevard 32920

## Unit Information

MLS Number: O6157518  
 Status: ACTIVE  
 Size: 871 Sq ft.  
 Bedrooms: 2  
 Full Bathrooms: 1  
 Half Bathrooms: 0  
 Parking Spaces:  
 View:  
 List Price: \$155,000  
 List PPSF: \$178  
 Valuated Price: \$72,000  
 Valuated PPSF: \$77

*The above valuated price is a baseline figure that does not take into account any specific renovation, upgrade, split, merge, or deterioration of the unit.*

## Building Information

Number of units: 129  
 Number of active listings for rent: 0  
 Number of active listings for sale: 2  
 Building inventory for sale: 1%  
 Number of sales over the last 12 months: 1  
 Number of sales over the last 6 months: 0  
 Number of sales over the last 3 months: 0

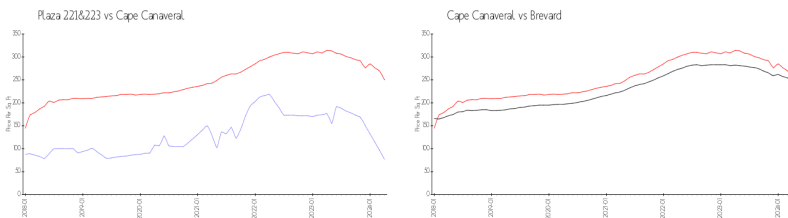
## Building Association Information

Plaza Condominiums  
 221 Columbia Drive Apartment 136  
 Cape Canaveral, FL  
 (321) 783-1007

## Recent Sales

Unit #	Size	Closing Date	Sale Price	PPSF
345	1,200 sq ft	Oct 2023	\$145,000	\$121

## Market Information



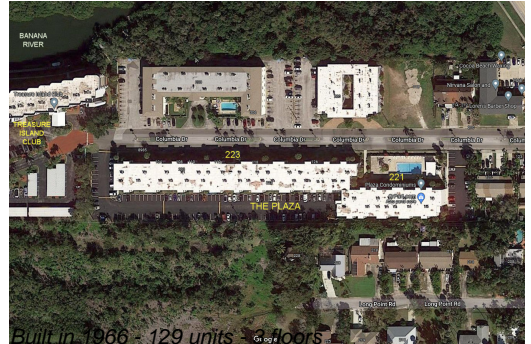
Plaza 221&223:	\$77/sq. ft.	Cape Canaveral:	\$250/sq. ft.
Cape Canaveral:	\$250/sq. ft.	Brevard:	\$226/sq. ft.

## Inventory for Sale

Plaza 221&223	2%
Cape Canaveral	1%
Brevard	1%

## Avg. Time to Close Over Last 12 Months

Plaza 221&223	16 days
Cape Canaveral	30 days



Brevard

39 days