

Unit 1200 NW 87th Ave # 410 - Sherwood Square A B&C

1200 NW 87th Ave # 410 - 1075 Riverside Dr, Coral Springs, FL, Broward 33071

Unit Information

MLS Number:	A11341589
Status:	Active
Size:	990 Sq ft.
Bedrooms:	2
Full Bathrooms:	2
Half Bathrooms:	
Parking Spaces:	Assigned Parking, Guest Parking
View:	
List Price:	\$229,000
List PPSF:	\$231
Valuated Price:	\$225,000
Valuated PPSF:	\$227

The above valuated price is a baseline figure that does not take into account any specific renovation, upgrade, split, merge, or deterioration of the unit.

Building Information

Number of units:	200
Number of active listings for rent:	0
Number of active listings for sale:	6
Building inventory for sale:	3%
Number of sales over the last 12 months:	4
Number of sales over the last 6 months:	1
Number of sales over the last 3 months:	1

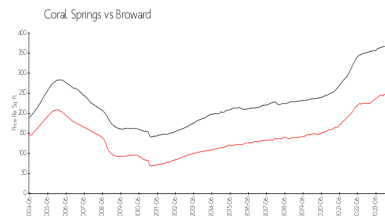
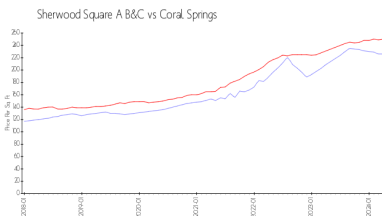
Building Association Information

SHERWOOD SQUARE
 HOMEOWNERS ASSOCIATION, INC.
 1155 RIVERSIDE DRIVE,
 CORAL SPRINGS FL33071

Recent Sales

Unit #	Size	Closing Date	Sale Price	PPSF
216	990 sq ft	May 2024	\$210,000	\$212
401	990 sq ft	Sep 2023	\$235,000	\$237
412	835 sq ft	Jun 2023	\$170,000	\$204
116	990 sq ft	Jun 2023	\$230,000	\$232

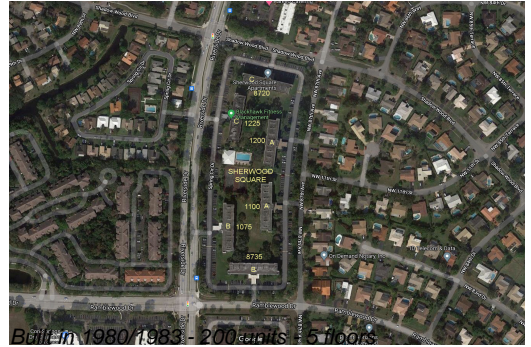
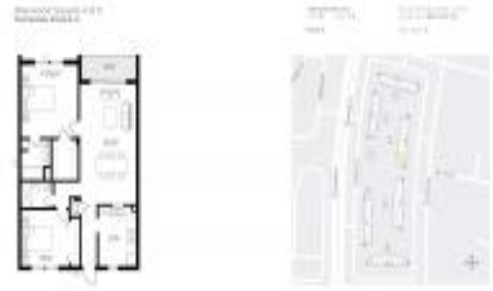
Market Information



Sherwood Square A B&C:	\$226/sq. ft.	Coral Springs:	\$250/sq. ft.
Coral Springs:	\$250/sq. ft.	Broward:	\$351/sq. ft.

Inventory for Sale

Sherwood Square A B&C	3%
Coral Springs	2%
Broward	4%



Avg. Time to Close Over Last 12 Months

Sherwood Square A B&C	53 days
Coral Springs	45 days
Broward	67 days