

Unit 206S - Summit Towers

206S - 1201 S Ocean Dr, Hollywood Beach, FL, Broward 33019

Unit Information

MLS Number: A11492784
 Status: Active
 Size: 832 Sq ft.
 Bedrooms: 1
 Full Bathrooms: 1
 Half Bathrooms:
 Parking Spaces: 2 Or More Spaces,Assigned Parking,Covered Parking,Guest Parking
 View:
 List Price: \$339,000
 List PPSF: \$407
 Valuated Price: \$306,000
 Valuated PPSF: \$369

The above valuated price is a baseline figure that does not take into account any specific renovation, upgrade, split, merge, or deterioration of the unit.

Building Information

Number of units: 567
 Number of active listings for rent: 4
 Number of active listings for sale: 18
 Building inventory for sale: 3%
 Number of sales over the last 12 months: 31
 Number of sales over the last 6 months: 24
 Number of sales over the last 3 months: 13

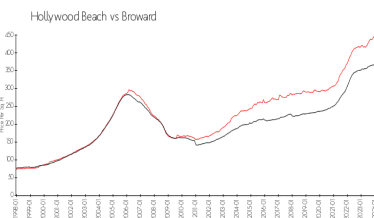
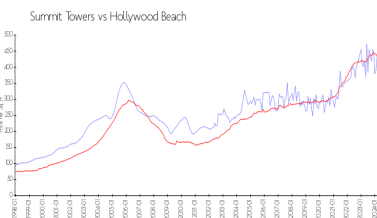
Building Association Information

Summit Towers Condominium Association Inc
 1201 S Ocean Drive Hollywood, FL33019
 (954) 925-3337

Recent Sales

Unit #	Size	Closing Date	Sale Price	PPSF
507S	1,190 sq ft	May 2024	\$415,000	\$349
208N	1,088 sq ft	May 2024	\$350,000	\$322
804N	1,600 sq ft	Apr 2024	\$500,000	\$313
120S	1,058 sq ft	Apr 2024	\$345,000	\$326
1001S	1,990 sq ft	Apr 2024	\$1,100,000	\$553

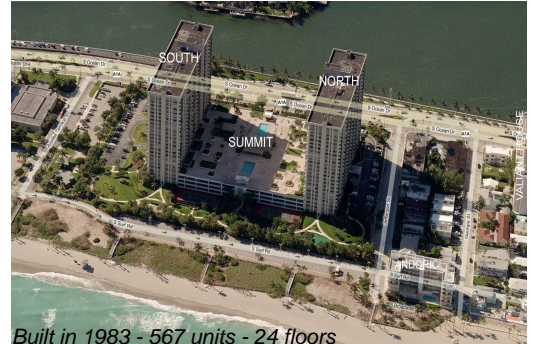
Market Information



Summit Towers: \$435/sq. ft.
 Hollywood Beach: \$426/sq. ft.
 Broward: \$351/sq. ft.

Inventory for Sale

Summit Towers 3%
 Hollywood Beach 5%
 Broward 4%



Avg. Time to Close Over Last 12 Months

Summit Towers	60 days
Hollywood Beach	85 days
Broward	67 days