

# Unit N316 - Waterway @ Hollywood Beach (North & South)

N316 - 2200 S Ocean Dr, Hollywood Beach, FL, Broward 33019

## Unit Information

MLS Number:	A11568301
Status:	Active
Size:	751 Sq ft.
Bedrooms:	1
Full Bathrooms:	1
Half Bathrooms:	
Parking Spaces:	1 Space,Assigned Parking
View:	Bay,Intracoastal View
Rental Price:	\$2,100
List PPSF:	\$3
Valuated Price:	\$206,000
Valuated PPSF:	\$274

*The above valuated price is a baseline figure that does not take into account any specific renovation, upgrade, split, merge, or deterioration of the unit.*

## Building Information

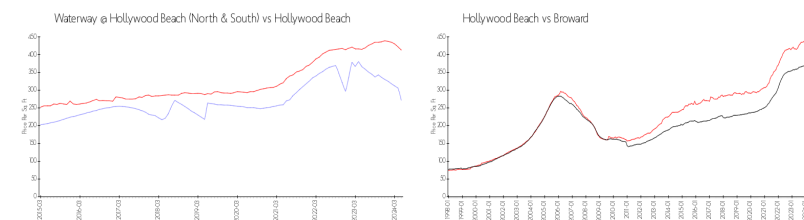
Number of units:	100
Number of active listings for rent:	0
Number of active listings for sale:	21
Building inventory for sale:	21%
Number of sales over the last 12 months:	26
Number of sales over the last 6 months:	11
Number of sales over the last 3 months:	4

## Building Association Information

The Waterway at Hollywood Beach  
Affinity Management Services  
2600 and 2200 S. Ocean Avenue  
?Hollywood, FL 33019-2753  
?Tel. (954) 800-8109

<http://www.thewaterwayhollywood.com/>

## Market Information

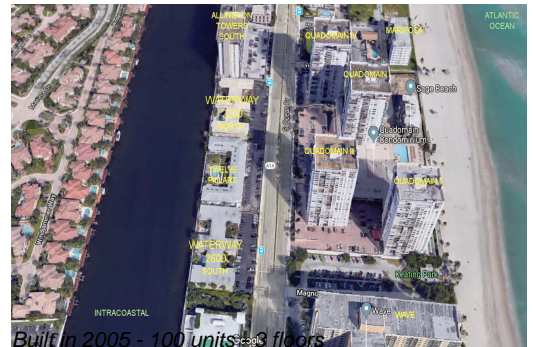


Waterway @ Hollywood Beach (North & South):	\$272/sq. ft.	Hollywood Beach:	\$413/sq. ft.
Hollywood Beach:	\$413/sq. ft.	Broward:	\$350/sq. ft.

## Inventory for Sale

Waterway @ Hollywood Beach (North & South)	21%
Hollywood Beach	5%
Broward	3%

## Avg. Time to Close Over Last 12 Months



Waterway @ Hollywood Beach (North & South)	67 days
Hollywood Beach	87 days
Broward	68 days