

Unit 1408 - Intracoastal Tower

1408 - 1505 N Riverside Dr, Pompano Beach, FL, Broward 33062

Unit Information

MLS Number: F10427173
 Status: Active
 Size: 1,069 Sq ft.
 Bedrooms: 2
 Full Bathrooms: 2
 Half Bathrooms: 0
 Parking Spaces: 1 Space,Assigned Parking,Covered Parking
 View: Intracoastal View,Ocean View,Water View
 List Price: \$425,000
 List PPSF: \$398
 Valuated Price: \$432,000
 Valuated PPSF: \$404

The above valuated price is a baseline figure that does not take into account any specific renovation, upgrade, split, merge, or deterioration of the unit.

Building Information

Number of units: 95
 Number of active listings for rent: 1
 Number of active listings for sale: 2
 Building inventory for sale: 2%
 Number of sales over the last 12 months: 12
 Number of sales over the last 6 months: 7
 Number of sales over the last 3 months: 5

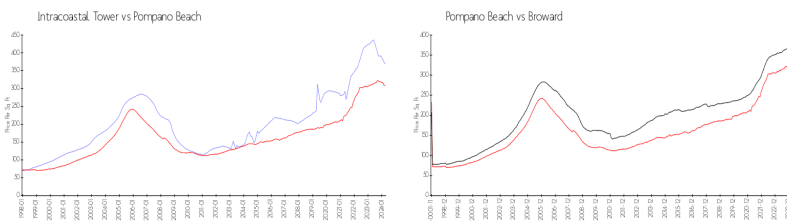
Building Association Information

Intracoastal Tower Condo
 1505 N Riverside Dr, Pompano Beach,
 FL 33062-3322
 (954) 781-9534
 (954) 942-3880

Recent Sales

Unit #	Size	Closing Date	Sale Price	PPSF
1003	1,069 sq ft	Apr 2024	\$425,000	\$398
604	1,069 sq ft	Apr 2024	\$430,000	\$402
506	1,069 sq ft	Mar 2024	\$385,000	\$360
801	1,069 sq ft	Mar 2024	\$335,000	\$313
503	1,069 sq ft	Mar 2024	\$360,000	\$337

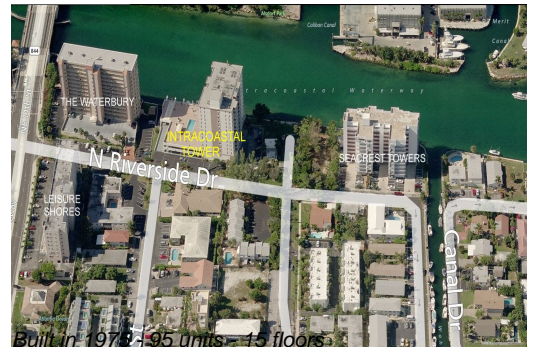
Market Information



Intracoastal Tower: \$369/sq. ft.
 Pompano Beach: \$308/sq. ft.
 Pompano Beach: \$308/sq. ft.
 Broward: \$351/sq. ft.

Inventory for Sale

Intracoastal Tower: 2%
 Pompano Beach: 3%
 Broward: 4%



Avg. Time to Close Over Last 12 Months

Intracoastal Tower	106 days
Pompano Beach	73 days
Broward	67 days