

Unit 550 SE 2nd Ave # G21 - Sequoia Gardens

550 SE 2nd Ave # G21 - 410 SE 2 Ave, Deerfield Beach, FL, Broward 33441

Unit Information

MLS Number: F10432243
Status: Active
Size: 840 Sq ft.
Bedrooms: 2
Full Bathrooms: 1
Half Bathrooms: 0
Parking Spaces: 1 Space
View: Garden View
List Price: \$190,000
List PPSF: \$226
Valuated Price: \$192,000
Valuated PPSF: \$229

The above valuated price is a baseline figure that does not take into account any specific renovation, upgrade, split, merge, or deterioration of the unit.

Building Information

Number of units: 140
Number of active listings for rent: 0
Number of active listings for sale: 19
Building inventory for sale: 13%
Number of sales over the last 12 months: 41
Number of sales over the last 6 months: 20
Number of sales over the last 3 months: 8

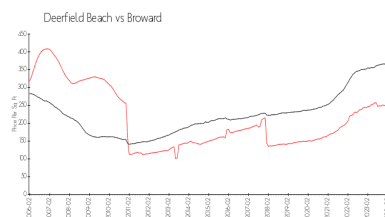
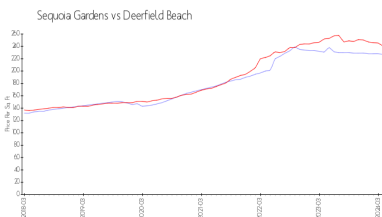
Building Association Information

Sequoia Gardens Condominium
Address: 510 SE 2nd Ave,
Deerfield Beach, FL 33441
Phone: +1 954-360-0127

Recent Sales

Unit #	Size	Closing Date	Sale Price	PPSF
21	1,000 sq ft	Mar 2024	\$255,000	\$255
L25		Jun 2023	\$195,000	

Market Information



Sequoia Gardens: \$227/sq. ft.
Deerfield Beach: \$240/sq. ft.

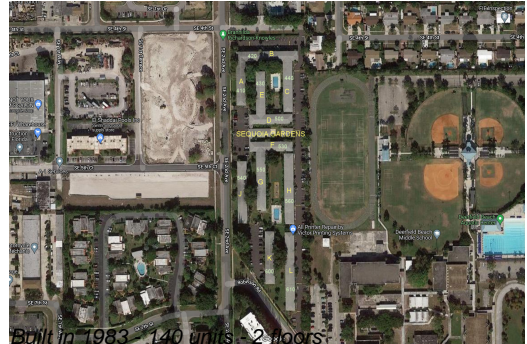
Deerfield Beach: \$240/sq. ft.
Broward: \$351/sq. ft.

Inventory for Sale

Sequoia Gardens: 14%
Deerfield Beach: 3%
Broward: 4%

Avg. Time to Close Over Last 12 Months

Sequoia Gardens: 88 days



Deerfield Beach
Broward

60 days
67 days