

Unit 600 SE 2nd Ave # K3 - Sequoia Gardens

600 SE 2nd Ave # K3 - 410 SE 2 Ave, Deerfield Beach, FL, Broward 33441

Unit Information

MLS Number: RX-10977919
 Status: Active
 Size: 840 Sq ft.
 Bedrooms: 2
 Full Bathrooms: 1
 Half Bathrooms: 0
 Parking Spaces: Assigned, Guest
 View:
 List Price: \$199,000
 List PPSF: \$237
 Valuated Price: \$190,000
 Valuated PPSF: \$226

The above valuated price is a baseline figure that does not take into account any specific renovation, upgrade, split, merge, or deterioration of the unit.

Building Information

Number of units: 140
 Number of active listings for rent: 0
 Number of active listings for sale: 20
 Building inventory for sale: 14%
 Number of sales over the last 12 months: 41
 Number of sales over the last 6 months: 20
 Number of sales over the last 3 months: 8

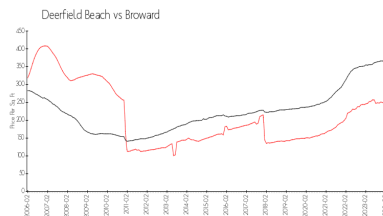
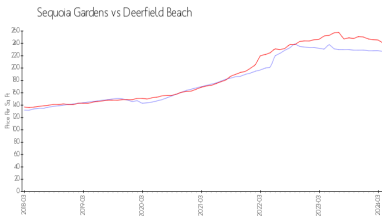
Building Association Information

Sequoia Gardens Condominium
 Address: 510 SE 2nd Ave,
 Deerfield Beach, FL 33441
 Phone: +1 954-360-0127

Recent Sales

Unit #	Size	Closing Date	Sale Price	PPSF
21	1,000 sq ft	Mar 2024	\$255,000	\$255
L25		Jun 2023	\$195,000	

Market Information



Sequoia Gardens: \$227/sq. ft.
 Deerfield Beach: \$240/sq. ft.

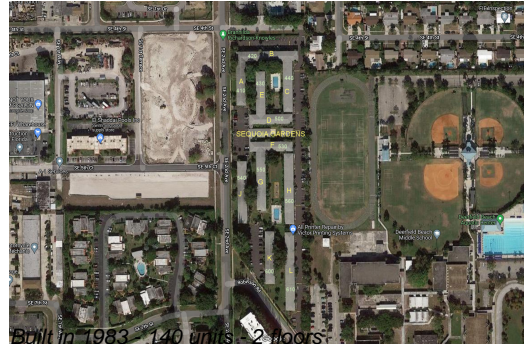
Deerfield Beach: \$240/sq. ft.
 Broward: \$351/sq. ft.

Inventory for Sale

Sequoia Gardens: 14%
 Deerfield Beach: 3%
 Broward: 4%

Avg. Time to Close Over Last 12 Months

Sequoia Gardens: 88 days



Deerfield Beach
Broward

60 days
67 days