

# Unit 1408 - Bishop's Court at Windsor Parke

1408 - 13700-13703 Richmond Park Dr N, Jacksonville, FL, Duval 32224

## Unit Information

MLS Number: 2005148  
 Status: Active  
 Size: 1,229 Sq ft.  
 Bedrooms: 2  
 Full Bathrooms: 2  
 Half Bathrooms:  
 Parking Spaces: Unassigned  
 View:  
 List Price: \$258,000  
 List PPSF: \$210  
 Valuated Price: \$251,000  
 Valuated PPSF: \$204

*The above valuated price is a baseline figure that does not take into account any specific renovation, upgrade, split, merge, or deterioration of the unit.*

## Building Information

Number of units: 324  
 Number of active listings for rent: 0  
 Number of active listings for sale: 2  
 Building inventory for sale: 0%  
 Number of sales over the last 12 months: 19  
 Number of sales over the last 6 months: 5  
 Number of sales over the last 3 months: 3

## Building Association Information

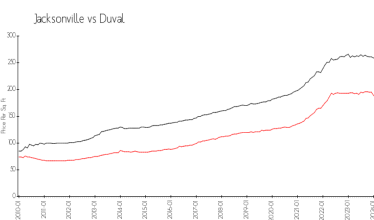
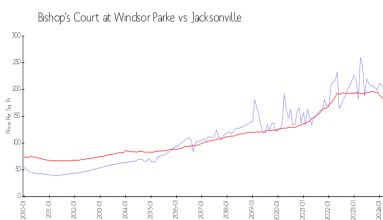
Bishop's Court At Windsor Park  
 Condominium Complex  
 Address: 13700 Richmond Park Dr N, Jacksonville, FL 32224,  
 Phone:+1 904-821-0156

<http://windsorparke.org/>

## Recent Sales

Unit #	Size	Closing Date	Sale Price	PPSF
2207	1,229 sq ft	Apr 2024	\$276,000	\$225
2302	757 sq ft	Apr 2024	\$178,000	\$235
2308	1,229 sq ft	Mar 2024	\$218,000	\$177
901	757 sq ft	Jan 2024	\$159,000	\$210
704	499 sq ft	Dec 2023	\$165,000	\$331

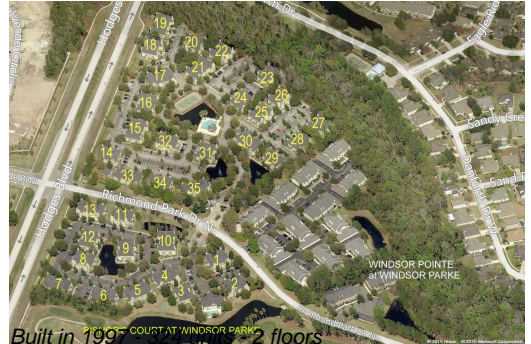
## Market Information



Bishop's Court at Windsor Parke:	\$203/sq. ft.	Jacksonville:	\$180/sq. ft.
Jacksonville:	\$180/sq. ft.	Duval:	\$222/sq. ft.

## Inventory for Sale

Bishop's Court at Windsor Parke 1%



Jacksonville	1%
Duval	1%

**Avg. Time to Close Over Last 12 Months**

Bishop's Court at Windsor Parke	n/a
Jacksonville	50 days
Duval	47 days