

Unit 1122 - Sail Cove

1122 - 10000 Gate Pkwy N, Jacksonville, FL, Duval 32246

Unit Information

MLS Number: 2012709
 Status: Active
 Size: 775 Sq ft.
 Bedrooms: 1
 Full Bathrooms: 1
 Half Bathrooms:
 Parking Spaces: Gated, Unassigned
 View: Trees/Woods
 List Price: \$190,000
 List PPSF: \$245
 Valuated Price: \$153,000
 Valuated PPSF: \$197

The above valuated price is a baseline figure that does not take into account any specific renovation, upgrade, split, merge, or deterioration of the unit.

Building Information

Number of units: 280
 Number of active listings for rent: 0
 Number of active listings for sale: 1
 Building inventory for sale: 0%
 Number of sales over the last 12 months: 10
 Number of sales over the last 6 months: 3
 Number of sales over the last 3 months: 3

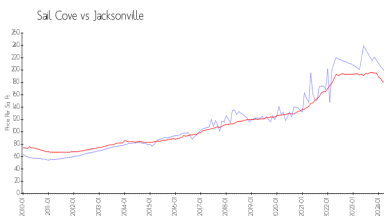
Building Association Information

Sail Cove Condominium Assoc Inc
 Jacksonville, FL 32246
 (904) 928-3867

Recent Sales

Unit #	Size	Closing Date	Sale Price	PPSF
611	1,340 sq ft	Apr 2024	\$259,000	\$193
915	1,340 sq ft	Apr 2024	\$258,000	\$193
1518	1,340 sq ft	Apr 2024	\$274,000	\$204
923	1,145 sq ft	Nov 2023	\$254,000	\$222
812	775 sq ft	Oct 2023	\$190,000	\$245
2021	775 sq ft	Oct 2023	\$195,000	\$252

Market Information

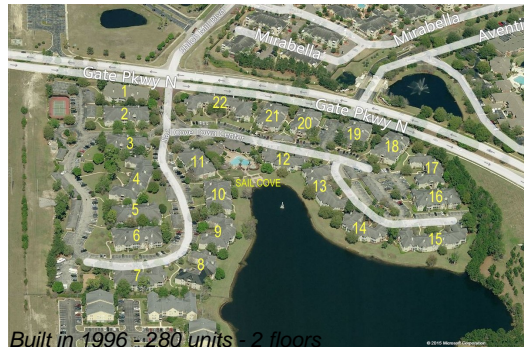


Sail Cove: \$197/sq. ft.
 Jacksonville: \$180/sq. ft.

Jacksonville: \$180/sq. ft.
 Duval: \$222/sq. ft.

Inventory for Sale

Sail Cove 0%
 Jacksonville 1%
 Duval 1%



Avg. Time to Close Over Last 12 Months

Sail Cove	n/a
Jacksonville	50 days
Duval	47 days