

Unit 2455 Lake Woodberry Cir - Regency Key

2455 Lake Woodberry Cir - 2202-2524 Lake Woodberry Cir, Brandon, FL, Hillsborough 33510

Unit Information

MLS Number: T3489713
 Status: ACTIVE
 Size: 1,184 Sq ft.
 Bedrooms: 2
 Full Bathrooms: 2
 Half Bathrooms: 1
 Parking Spaces: None
 View:
 List Price: \$212,000
 List PPSF: \$179
 Valuated Price: \$222,000
 Valuated PPSF: \$188

The above valuated price is a baseline figure that does not take into account any specific renovation, upgrade, split, merge, or deterioration of the unit.

Building Information

Number of units: 198
 Number of active listings for rent: 0
 Number of active listings for sale: 6
 Building inventory for sale: 3%
 Number of sales over the last 12 months: 11
 Number of sales over the last 6 months: 5
 Number of sales over the last 3 months: 5

Building Association Information

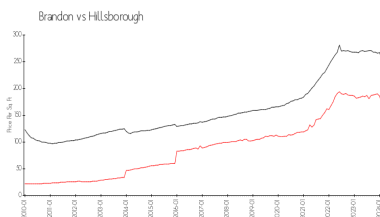
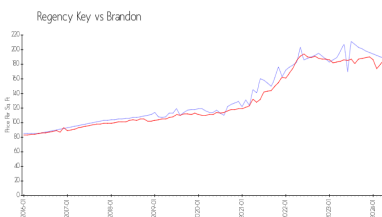
Regency Key
 Management Company
 Ameri-Tech Community Management
 24701 U.S. Hwy 19 North – Suite 102
 Clearwater, FL 33763
 T: 813-636-0000 Ext. 311
 AMERI-TECH Property

<http://regencykey.org/>

Recent Sales

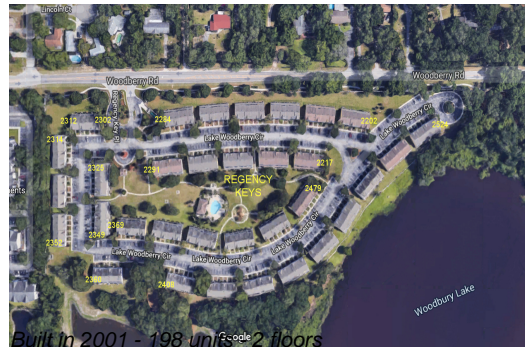
Unit #	Size	Closing Date	Sale Price	PPSF
2258	1,184 sq ft	Apr 2024	\$235,000	\$198
	1,110 sq ft	Mar 2024	\$224,900	\$203
	1,110 sq ft	Mar 2024	\$235,000	\$212
	1,110 sq ft	Mar 2024	\$227,040	\$205
	1,184 sq ft	Feb 2024	\$225,000	\$190

Market Information



Regency Key: \$188/sq. ft.
 Brandon: \$186/sq. ft.

Brandon: \$186/sq. ft.
 Hillsborough: \$251/sq. ft.



Inventory for Sale

Regency Key	3%
Brandon	1%
Hillsborough	2%

Avg. Time to Close Over Last 12 Months

Regency Key	29 days
Brandon	34 days
Hillsborough	44 days