

Unit 4717 Chatterton Way - Magnolia Park Central

4717 Chatterton Way - 4603-4733 Sommerset Hill Ln, Riverview, FL, Hillsborough 33578

Unit Information

MLS Number: T3521795
 Status: ACTIVE
 Size: 1,320 Sq ft.
 Bedrooms: 2
 Full Bathrooms: 2
 Half Bathrooms: 1
 Parking Spaces:
 View:
 List Price: \$247,900
 List PPSF: \$188
 Valuated Price: \$249,000
 Valuated PPSF: \$189

The above valuated price is a baseline figure that does not take into account any specific renovation, upgrade, split, merge, or deterioration of the unit.

Building Information

Number of units: 108
 Number of active listings for rent: 0
 Number of active listings for sale: 3
 Building inventory for sale: 2%
 Number of sales over the last 12 months: 11
 Number of sales over the last 6 months: 6
 Number of sales over the last 3 months: 3

Building Association Information

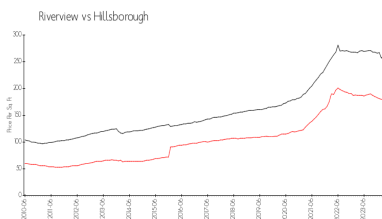
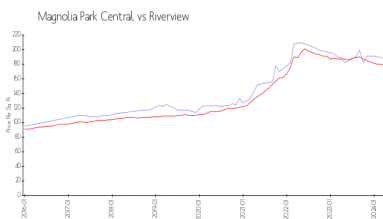
Magnolia Park @ Riverview
 Homeowners Association
 9203 Sienna Moss Ln,
 Riverview, FL 33578
 (813) 671-6500

https://www.lelandmanagement.com/community_sessions/login/803

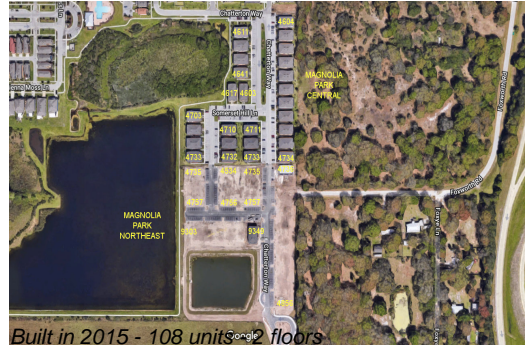
Recent Sales

Unit #	Size	Closing Date	Sale Price	PPSF
	1,280 sq ft	Apr 2024	\$257,000	\$201
	1,320 sq ft	Mar 2024	\$205,000	\$155
	1,320 sq ft	Mar 2024	\$250,000	\$189
	1,280 sq ft	Feb 2024	\$240,000	\$188
	1,320 sq ft	Feb 2024	\$255,000	\$193

Market Information



Magnolia Park Central:	\$188/sq. ft.	Riverview:	\$178/sq. ft.
Riverview:	\$178/sq. ft.	Hillsborough:	\$251/sq. ft.



Inventory for Sale

Magnolia Park Central	3%
Riverview	2%
Hillsborough	2%

Avg. Time to Close Over Last 12 Months

Magnolia Park Central	20 days
Riverview	43 days
Hillsborough	44 days