

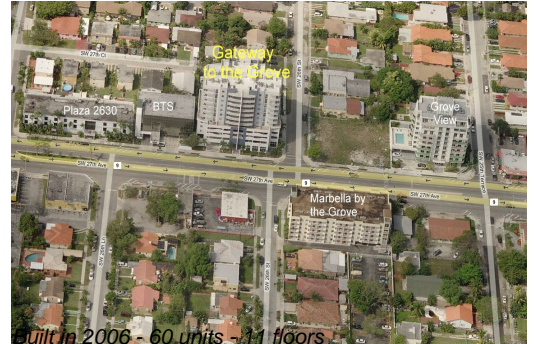
Unit 704 - Gateway to the Grove

704 - 2600 SW 27 Ave, Miami, FL, Miami-Dade 33133

Unit Information

MLS Number: A11568284
 Status: Active
 Size: 997 Sq ft.
 Bedrooms: 2
 Full Bathrooms: 2
 Half Bathrooms:
 Parking Spaces: 2 Spaces, Assigned Parking, Covered Parking
 View:
 Rental Price: \$3,300
 List PPSF: \$3
 Valuated Price: \$502,000
 Valuated PPSF: \$504

The above valuated price is a baseline figure that does not take into account any specific renovation, upgrade, split, merge, or deterioration of the unit.



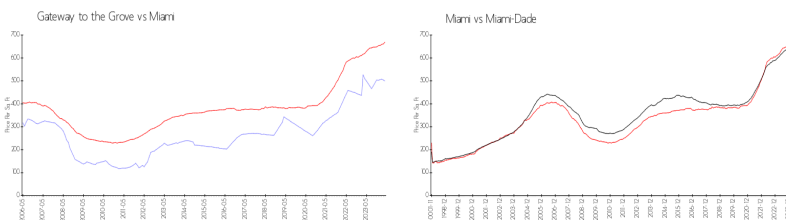
Building Information

Number of units: 60
 Number of active listings for rent: 1
 Number of active listings for sale: 0
 Building inventory for sale: 0%
 Number of sales over the last 12 months: 4
 Number of sales over the last 6 months: 0
 Number of sales over the last 3 months: 0

Building Association Information

Gateway to The Grove Condominium Association Inc
 (786) 552-9963

Market Information



Gateway to the Grove:	\$499/sq. ft.	Miami:	\$669/sq. ft.
Miami:	\$669/sq. ft.	Miami-Dade:	\$694/sq. ft.

Inventory for Sale

Gateway to the Grove: 0%
 Miami: 4%
 Miami-Dade: 3%

Avg. Time to Close Over Last 12 Months

Gateway to the Grove: 42 days
 Miami: 84 days
 Miami-Dade: 81 days