

Unit 1452 SE 24th Ave - Palm Breeze at Keys Gate

1452 SE 24th Ave - 1460-1495 SE 25 Ter, Homestead, FL, Miami-Dade 33035

Unit Information

MLS Number: F10426362
 Status: Active
 Size: 1,916 Sq ft.
 Bedrooms: 4
 Full Bathrooms: 3
 Half Bathrooms: 0
 Parking Spaces: 1 Space, 2 Or More Spaces
 View: Other View
 List Price: \$415,000
 List PPSF: \$217
 Valuated Price: \$421,000
 Valuated PPSF: \$220

The above valuated price is a baseline figure that does not take into account any specific renovation, upgrade, split, merge, or deterioration of the unit.

Building Information

Number of units: 403
 Number of active listings for rent: 0
 Number of active listings for sale: 11
 Building inventory for sale: 2%
 Number of sales over the last 12 months: 13
 Number of sales over the last 6 months: 9
 Number of sales over the last 3 months: 4

Building Association Information

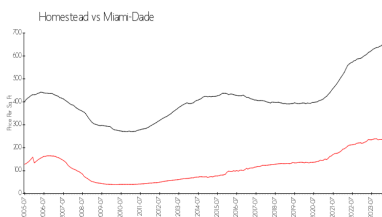
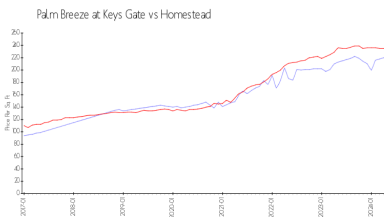
Palm Breeze at Keys Gate
 Address: 1427 SE 24th Rd,
 Homestead, FL 33035,
 Phone: +1 786-349-1000

<https://keysgatehometown.com/>

Recent Sales

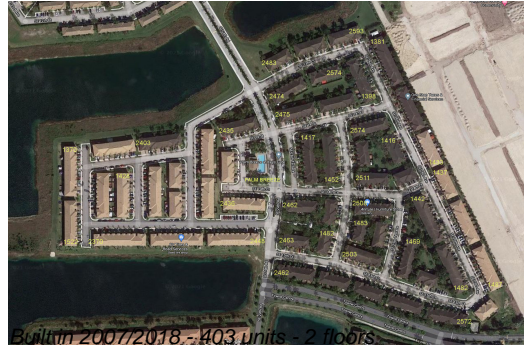
Unit #	Size	Closing Date	Sale Price	PPSF
	1,704 sq ft	May 2024	\$378,000	\$222
	1,852 sq ft	May 2024	\$399,000	\$215
	1,852 sq ft	May 2024	\$390,000	\$211
1421	1,732 sq ft	Apr 2024	\$3,510,000	\$2,027
1393	1,856 sq ft	Feb 2024	\$400,000	\$216

Market Information



Palm Breeze at Keys Gate: \$220/sq. ft.
 Homestead: \$235/sq. ft.
 Homestead: \$235/sq. ft.
 Miami-Dade: \$694/sq. ft.

Inventory for Sale



Palm Breeze at Keys Gate	3%
Homestead	2%
Miami-Dade	3%

Avg. Time to Close Over Last 12 Months

Palm Breeze at Keys Gate	52 days
Homestead	45 days
Miami-Dade	81 days