

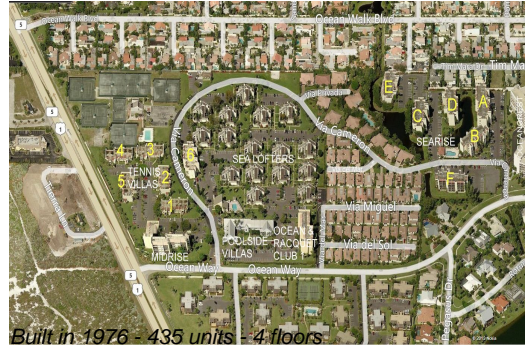
# Unit Sea Lofters G-10 - Jupiter Ocean & Racquet Club

Sea Lofters G-10 - 1605 S US Hwy 1, Jupiter, FL, Palm Beach 33477

## Unit Information

MLS Number: A11551440  
 Status: Active  
 Size: 1,160 Sq ft.  
 Bedrooms: 2  
 Full Bathrooms: 2  
 Half Bathrooms:  
 Parking Spaces: 1 Space, Additional Spaces Available, Assigned Parking, Guest Parking

View:  
 List Price: \$599,000  
 List PPSF: \$516  
 Valuated Price: \$535,000  
 Valuated PPSF: \$461



*The above valuated price is a baseline figure that does not take into account any specific renovation, upgrade, split, merge, or deterioration of the unit.*

## Building Information

Number of units: 435  
 Number of active listings for rent: 0  
 Number of active listings for sale: 25  
 Building inventory for sale: 5%  
 Number of sales over the last 12 months: 21  
 Number of sales over the last 6 months: 9  
 Number of sales over the last 3 months: 4

## Building Association Information

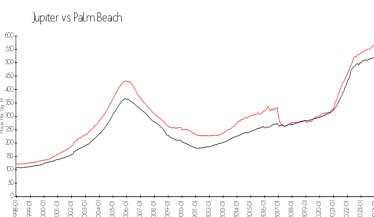
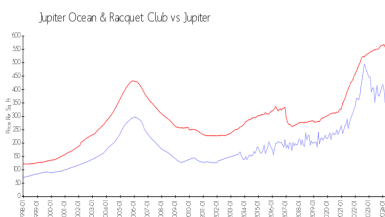
Jupiter Ocean & Racquet Club Association Address: 1605 U.S. 1, Jupiter, FL 33477  
 Phone: (561) 747-5331

<http://jorcinc.net/site/>

## Recent Sales

Unit #	Size	Closing Date	Sale Price	PPSF
3G	1,160 sq ft	Apr 2024	\$470,000	\$405
3h	1,160 sq ft	Apr 2024	\$600,000	\$517
V-6 206	1,200 sq ft	Mar 2024	\$350,000	\$292
A106	860 sq ft	Mar 2024	\$335,000	\$390
V4-106	965 sq ft	Feb 2024	\$320,000	\$332
A302	860 sq ft	Feb 2024	\$370,000	\$430

## Market Information



Jupiter Ocean & Racquet Club:	\$413/sq. ft.	Jupiter:	\$557/sq. ft.
Jupiter:	\$557/sq. ft.	Palm Beach:	\$475/sq. ft.

## Inventory for Sale

Jupiter Ocean & Racquet Club	6%
Jupiter	3%
Palm Beach	3%

## Avg. Time to Close Over Last 12 Months

Jupiter Ocean & Racquet Club	63 days
Jupiter	66 days
Palm Beach	56 days