

Unit 21201 Glenmoor Dr - Sterling Villages of Palm Beach Lakes

21201 Glenmoor Dr - 1101-22304 Glenmoor Dr, West Palm Beach, FL, Palm Beach 33409

Unit Information

MLS Number:	A11552146
Status:	Active
Size:	1,510 Sq ft.
Bedrooms:	3
Full Bathrooms:	2
Half Bathrooms:	1
Parking Spaces:	2 Or More Spaces, Guest Parking
View:	
List Price:	\$335,000
List PPSF:	\$222
Valuated Price:	\$353,000
Valuated PPSF:	\$234

The above valuated price is a baseline figure that does not take into account any specific renovation, upgrade, split, merge, or deterioration of the unit.

Building Information

Number of units:	319
Number of active listings for rent:	0
Number of active listings for sale:	15
Building inventory for sale:	4%
Number of sales over the last 12 months:	22
Number of sales over the last 6 months:	13
Number of sales over the last 3 months:	9

Building Association Information

Sterling Villages-Palm Beach
 Address: 1100 Village Blvd,
 West Palm Beach, FL 33409,
 Phone: +1 561-471-9292

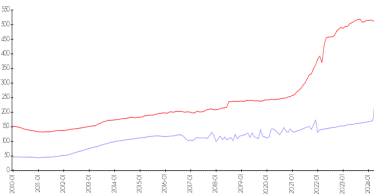
<http://www.thesterlingwpb.com/>

Recent Sales

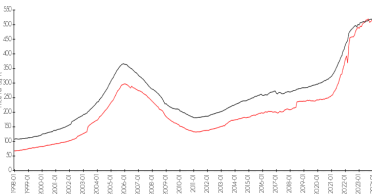
Unit #	Size	Closing Date	Sale Price	PPSF
	850 sq ft	May 2024	\$191,000	\$225
	800 sq ft	Apr 2024	\$180,000	\$225
0	850 sq ft	Apr 2024	\$185,000	\$218
	800 sq ft	Apr 2024	\$187,000	\$234
	980 sq ft	Apr 2024	\$227,000	\$232
	750 sq ft	Apr 2024	\$195,000	\$260

Market Information

Sterling Villages of Palm Beach Lakes vs West Palm Beach

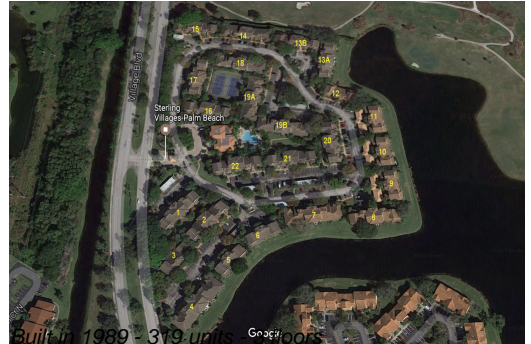


West Palm Beach vs Palm Beach



Sterling Villages of Palm Beach Lakes: \$233/sq. ft.
 West Palm Beach: \$511/sq. ft.

West Palm Beach: \$511/sq. ft.
 Palm Beach: \$475/sq. ft.



Inventory for Sale

Sterling Villages of Palm Beach Lakes	5%
West Palm Beach	4%
Palm Beach	3%

Avg. Time to Close Over Last 12 Months

Sterling Villages of Palm Beach Lakes	37 days
West Palm Beach	52 days
Palm Beach	56 days