

# Unit 1-335 - Flagler Pointe

1-335 - 1805 N Flagler Drive, West Palm Beach, FL, Palm Beach 33407

## Unit Information

MLS Number:	A11556335
Status:	Active
Size:	1,071 Sq ft.
Bedrooms:	2
Full Bathrooms:	2
Half Bathrooms:	
Parking Spaces:	Assigned Parking, Guest Parking
View:	Intracoastal View, Pool Area View, Water View
Rental Price:	\$2,500
List PPSF:	\$2
Valuated Price:	\$435,000
Valuated PPSF:	\$406

*The above valuated price is a baseline figure that does not take into account any specific renovation, upgrade, split, merge, or deterioration of the unit.*

## Building Information

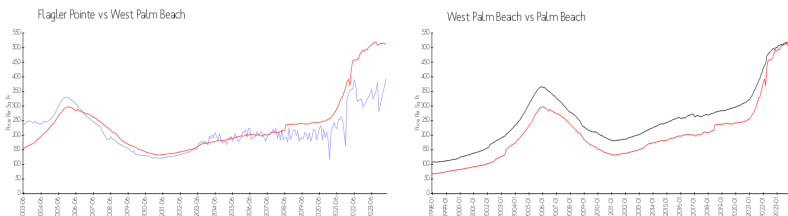
Number of units:	400
Number of active listings for rent:	27
Number of active listings for sale:	23
Building inventory for sale:	5%
Number of sales over the last 12 months:	25
Number of sales over the last 6 months:	14
Number of sales over the last 3 months:	8

## Building Association Information

Flagler Pointe Condominium Association of West Palm Beach, Inc  
 c/o Castle Management, LLC  
 1801 North Flagler Drive  
 West Palm Beach, FL 33407  
 Phone: (561) 822-9970  
 Concierge: (561) 833-7024

<http://flaglerpointe.us/Management-Contacts~301897~20085.htm>

## Market Information



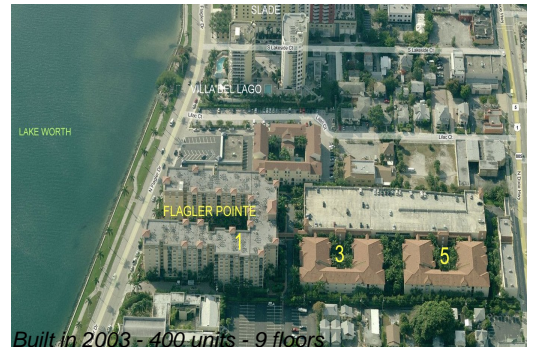
Flagler Pointe:	\$394/sq. ft.	West Palm Beach:	\$511/sq. ft.
West Palm Beach:	\$511/sq. ft.	Palm Beach:	\$475/sq. ft.

## Inventory for Sale

Flagler Pointe	6%
West Palm Beach	4%
Palm Beach	3%

## Avg. Time to Close Over Last 12 Months

Flagler Pointe	67 days
----------------	---------



West Palm Beach  
Palm Beach

52 days  
56 days