

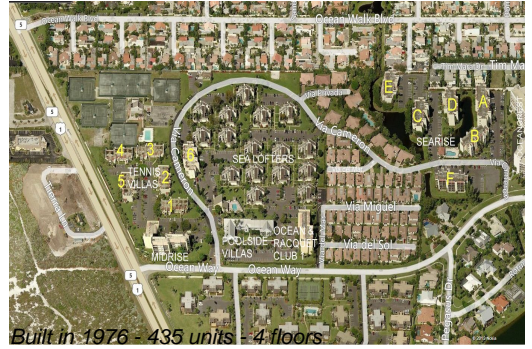
Unit Midrise M-1303 - Jupiter Ocean & Racquet Club

Midrise M-1303 - 1605 S US Hwy 1, Jupiter, FL, Palm Beach 33477

Unit Information

MLS Number:	A11567695
Status:	Active
Size:	1,500 Sq ft.
Bedrooms:	2
Full Bathrooms:	2
Half Bathrooms:	
Parking Spaces:	1 Space,Assigned Parking,Guest Parking
View:	
List Price:	\$579,000
List PPSF:	\$386
Valuated Price:	\$504,000
Valuated PPSF:	\$336

The above valuated price is a baseline figure that does not take into account any specific renovation, upgrade, split, merge, or deterioration of the unit.



Building Information

Number of units:	435
Number of active listings for rent:	0
Number of active listings for sale:	25
Building inventory for sale:	5%
Number of sales over the last 12 months:	21
Number of sales over the last 6 months:	9
Number of sales over the last 3 months:	4

Building Association Information

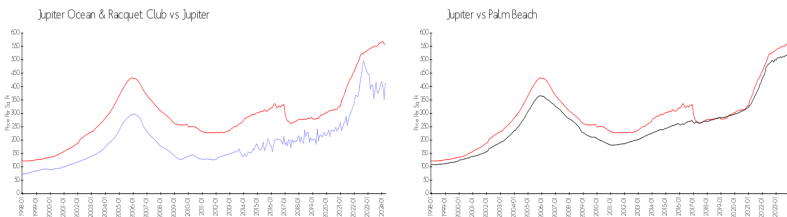
Jupiter Ocean & Racquet Club Association Address: 1605 U.S. 1,
Jupiter, FL 33477
Phone:(561) 747-5331

<http://jorcinc.net/site/>

Recent Sales

Unit #	Size	Closing Date	Sale Price	PPSF
3G	1,160 sq ft	Apr 2024	\$470,000	\$405
3h	1,160 sq ft	Apr 2024	\$600,000	\$517
V-6 206	1,200 sq ft	Mar 2024	\$350,000	\$292
A106	860 sq ft	Mar 2024	\$335,000	\$390
V4-106	965 sq ft	Feb 2024	\$320,000	\$332
A302	860 sq ft	Feb 2024	\$370,000	\$430

Market Information



Jupiter Ocean & Racquet Club:	\$413/sq. ft.	Jupiter:	\$557/sq. ft.
Jupiter:	\$557/sq. ft.	Palm Beach:	\$475/sq. ft.

Inventory for Sale

Jupiter Ocean & Racquet Club	6%
Jupiter	3%
Palm Beach	3%

Avg. Time to Close Over Last 12 Months

Jupiter Ocean & Racquet Club	63 days
Jupiter	66 days
Palm Beach	56 days