

Unit A-203 - Jupiter Bay East

A-203 - 275 Palm Av, Jupiter, FL, Palm Beach 33477



Unit Information

MLS Number: A11575899
 Status: Active
 Size: 1,250 Sq ft.
 Bedrooms: 2
 Full Bathrooms: 2
 Half Bathrooms:
 Parking Spaces: 2 Or More Spaces, Guest Parking
 View:
 List Price: \$675,000
 List PPSF: \$540
 Valuated Price: \$590,000
 Valuated PPSF: \$472

The above valuated price is a baseline figure that does not take into account any specific renovation, upgrade, split, merge, or deterioration of the unit.

Building Information

Number of units: 135
 Number of active listings for rent: 0
 Number of active listings for sale: 3
 Building inventory for sale: 2%
 Number of sales over the last 12 months: 7
 Number of sales over the last 6 months: 3
 Number of sales over the last 3 months: 2

Building Association Information

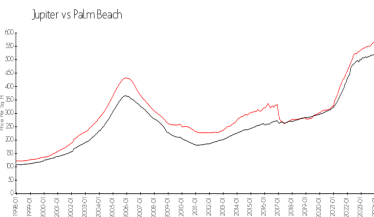
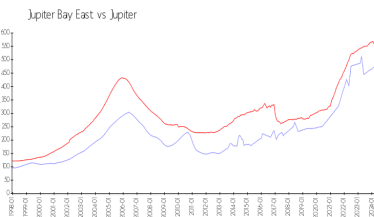
Jupiter Bay East Condo Association
 275 Palm Ave, #D105, Jupiter, FL 33477
 (561) 746-5857

<http://www.jupiterbaycondoassoc.com/id63.html>

Recent Sales

Unit #	Size	Closing Date	Sale Price	PPSF
A105	900 sq ft	Apr 2024	\$350,000	\$389
D-205	900 sq ft	Apr 2024	\$420,000	\$467
B206	1,400 sq ft	Nov 2023	\$635,000	\$454
C102	1,250 sq ft	Oct 2023	\$687,500	\$550
B404	900 sq ft	Jun 2023	\$405,000	\$450
A103	1,250 sq ft	Jun 2023	\$621,000	\$497

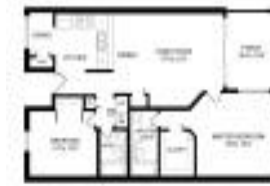
Market Information



Jupiter Bay East: \$476/sq. ft.
 Jupiter: \$557/sq. ft.
 Jupiter: \$557/sq. ft.
 Palm Beach: \$475/sq. ft.

Inventory for Sale

Jupiter Bay East: 2%
 Jupiter: 3%



Palm Beach

3%

Avg. Time to Close Over Last 12 Months

Jupiter Bay East

69 days

Jupiter

66 days

Palm Beach

56 days