

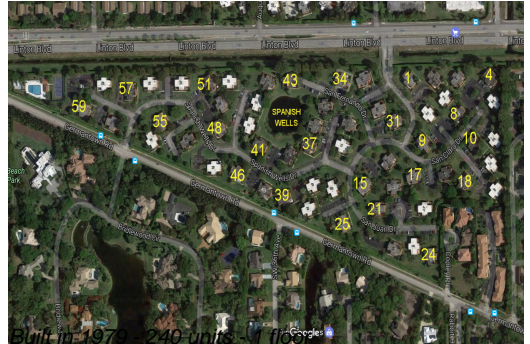
Unit 3428 San Bernadino Dr # 58-A - Spanish Wells

3428 San Bernadino Dr # 58-A - 3100-3412 Spanish Wells Dr, Delray Beach, FL, Palm Beach 33445

Unit Information

MLS Number:	F10415668
Status:	Active
Size:	1,230 Sq ft.
Bedrooms:	2
Full Bathrooms:	2
Half Bathrooms:	1
Parking Spaces:	2 Or More Spaces,Assigned Parking,Guest Parking
View:	Garden View
List Price:	\$449,900
List PPSF:	\$366
Valuated Price:	\$428,000
Valuated PPSF:	\$348

The above valuated price is a baseline figure that does not take into account any specific renovation, upgrade, split, merge, or deterioration of the unit.



Building Information

Number of units:	240
Number of active listings for rent:	0
Number of active listings for sale:	2
Building inventory for sale:	0%
Number of sales over the last 12 months:	13
Number of sales over the last 6 months:	7
Number of sales over the last 3 months:	4

Building Association Information

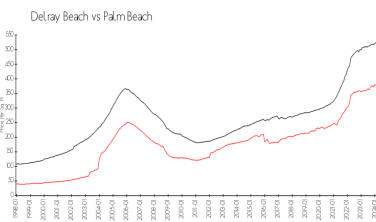
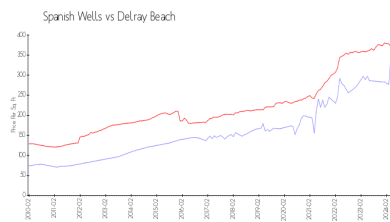
Spanish Wells Condo Association
 Address 3435 San Bernadino Dr
 Delray Beach, Florida 33445
 Phone (561) 637-4298

http://www.spanishwellscondo.com/spanishwells/outside_home.asp

Recent Sales

Unit #	Size	Closing Date	Sale Price	PPSF
6-D	1,230 sq ft	May 2024	\$360,000	\$293
31-A	1,623 sq ft	May 2024	\$315,000	\$194
33B	1,230 sq ft	Mar 2024	\$349,000	\$284
1C	1,230 sq ft	Mar 2024	\$332,500	\$270
22-B	1,230 sq ft	Feb 2024	\$311,000	\$253

Market Information



Spanish Wells: \$348/sq. ft.
 Delray Beach: \$371/sq. ft.

Delray Beach: \$371/sq. ft.
 Palm Beach: \$475/sq. ft.

Inventory for Sale

Spanish Wells	1%
Delray Beach	3%
Palm Beach	3%

Avg. Time to Close Over Last 12 Months

Spanish Wells	38 days
Delray Beach	54 days
Palm Beach	56 days