

Unit 508 - 200 East

508 - 200 E Palmetto Park Rd, Boca Raton, FL, Palm Beach 33432

Unit Information

MLS Number: F10419113
 Status: Active
 Size: 2,251 Sq ft.
 Bedrooms: 2
 Full Bathrooms: 2
 Half Bathrooms: 1
 Parking Spaces: 2 Or More Spaces,Covered Parking,Parking-Under Building
 View: Garden View,Golf View,Water View
 List Price: \$2,050,000
 List PPSF: \$911
 Valuated Price: \$1,639,000
 Valuated PPSF: \$728

The above valuated price is a baseline figure that does not take into account any specific renovation, upgrade, split, merge, or deterioration of the unit.

Building Information

Number of units: 115
 Number of active listings for rent: 1
 Number of active listings for sale: 6
 Building inventory for sale: 5%
 Number of sales over the last 12 months: 10
 Number of sales over the last 6 months: 8
 Number of sales over the last 3 months: 5

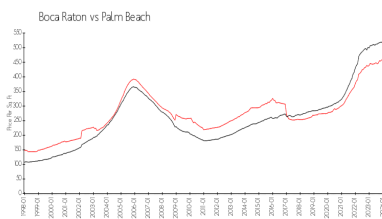
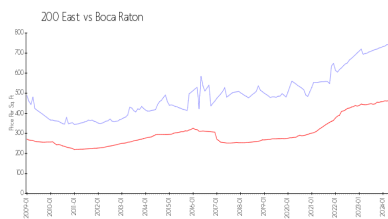
Building Association Information

200 East Palmetto Park Condominium Association, 200 E Palmetto Park Road
 Boca Raton, FL33432
 (561) 368-9045

Recent Sales

Unit #	Size	Closing Date	Sale Price	PPSF
802	2,168 sq ft	Apr 2024	\$1,599,000	\$738
401	3,518 sq ft	Apr 2024	\$1,525,000	\$433
509	2,156 sq ft	Mar 2024	\$1,825,000	\$846
810	2,018 sq ft	Feb 2024	\$1,500,000	\$743
707	2,549 sq ft	Feb 2024	\$1,700,000	\$667
705	2,490 sq ft	Feb 2024	\$1,665,000	\$669
702	2,168 sq ft	Feb 2024	\$1,600,000	\$738

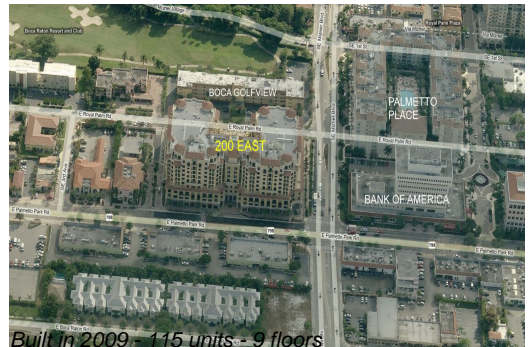
Market Information



200 East: \$744/sq. ft. Boca Raton: \$463/sq. ft.
 Boca Raton: \$463/sq. ft. Palm Beach: \$475/sq. ft.

Inventory for Sale

200 East: 5%
 Boca Raton: 3%
 Palm Beach: 3%



Avg. Time to Close Over Last 12 Months

200 East	59 days
Boca Raton	57 days
Palm Beach	56 days