

Unit 36 Suffolk A - Suffolk at Century Village (A to G)

36 Suffolk A - 1-294 Suffolk, Boca Raton, FL, Palm Beach 33434

Unit Information

MLS Number:	F10426610
Status:	Active
Size:	600 Sq ft.
Bedrooms:	1
Full Bathrooms:	1
Half Bathrooms:	1
Parking Spaces:	1 Space
View:	Garden View
List Price:	\$134,900
List PPSF:	\$225
Valuated Price:	\$88,000
Valuated PPSF:	\$146

The above valuated price is a baseline figure that does not take into account any specific renovation, upgrade, split, merge, or deterioration of the unit.

Building Information

Number of units:	294
Number of active listings for rent:	0
Number of active listings for sale:	18
Building inventory for sale:	6%
Number of sales over the last 12 months:	22
Number of sales over the last 6 months:	8
Number of sales over the last 3 months:	2

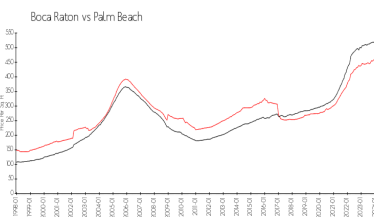
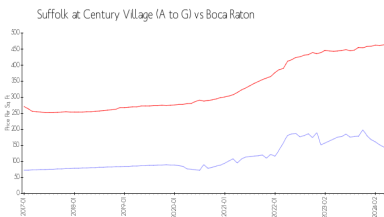
Building Association Information

Century Village at Boca Raton
 Address: 19296 Lyons Rd,
 Boca Raton, FL 33434
 Phone: +1 561-451-1211

Recent Sales

Unit #	Size	Closing Date	Sale Price	PPSF
174	715 sq ft	Apr 2024	\$90,000	\$126
275	810 sq ft	Mar 2024	\$96,000	\$119
	675 sq ft	Jan 2024	\$85,500	\$127
	675 sq ft	Jan 2024	\$105,000	\$156
	944 sq ft	Jan 2024	\$145,000	\$154
	810 sq ft	Jan 2024	\$115,000	\$142

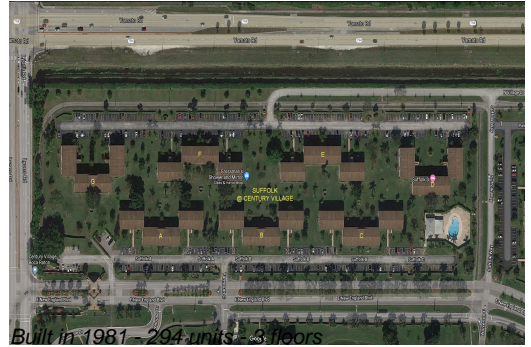
Market Information



Suffolk at Century Village (A to G):	\$145/sq. ft.	Boca Raton:	\$463/sq. ft.
Boca Raton:	\$463/sq. ft.	Palm Beach:	\$475/sq. ft.

Inventory for Sale

Suffolk at Century Village (A to G) 6%



Boca Raton	3%
Palm Beach	3%

Avg. Time to Close Over Last 12 Months

Suffolk at Century Village (A to G)	65 days
Boca Raton	57 days
Palm Beach	56 days