

Unit 2678 N Federal Hwy # 32 - Peninsula on the Intracoastal

2678 N Federal Hwy # 32 - 2670-2700 N Federal Hwy, Boynton Beach, FL, Palm Beach 33435

Unit Information

MLS Number:	F10431527
Status:	Active
Size:	1,822 Sq ft.
Bedrooms:	3
Full Bathrooms:	3
Half Bathrooms:	1
Parking Spaces:	Guest Parking
View:	Other View
List Price:	\$699,000
List PPSF:	\$384
Valuated Price:	\$493,000
Valuated PPSF:	\$263

The above valuated price is a baseline figure that does not take into account any specific renovation, upgrade, split, merge, or deterioration of the unit.

Building Information

Number of units:	70
Number of active listings for rent:	0
Number of active listings for sale:	4
Building inventory for sale:	5%
Number of sales over the last 12 months:	3
Number of sales over the last 6 months:	2
Number of sales over the last 3 months:	2

Building Association Information

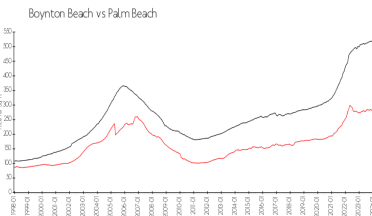
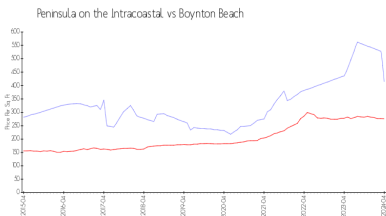
Peninsula on the Intracoastal
561-740-3400

<http://peninsulaboynnton.com/>

Recent Sales

Unit #	Size	Closing Date	Sale Price	PPSF
507	1,742 sq ft	Apr 2024	\$685,000	\$393
9	1,933 sq ft	Mar 2024	\$575,000	\$297
1	1,720 sq ft	Aug 2023	\$612,000	\$356

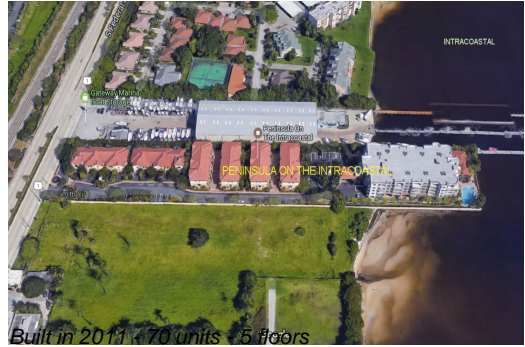
Market Information



Peninsula on the Intracoastal:	\$414/sq. ft.	Boynton Beach:	\$276/sq. ft.
Boynton Beach:	\$276/sq. ft.	Palm Beach:	\$475/sq. ft.

Inventory for Sale

Peninsula on the Intracoastal	6%
Boynton Beach	2%



Palm Beach

3%

Avg. Time to Close Over Last 12 Months

Peninsula on the Intracoastal

1 days

Boynton Beach

48 days

Palm Beach

56 days