

Unit 101A - Ocean Parks (A to O)

101A - 300 N Highway A1A, Jupiter, FL, Palm Beach 33477

Unit Information

MLS Number: RX-10914853
 Status: Active
 Size: 1,240 Sq ft.
 Bedrooms: 2
 Full Bathrooms: 2
 Half Bathrooms: 0
 Parking Spaces: Assigned, Carport - Detached, Covered, Guest, Vehicle Restrictions
 View: Pond
 List Price: \$450,000
 List PPSF: \$363
 Valuated Price: \$340,000
 Valuated PPSF: \$274

The above valuated price is a baseline figure that does not take into account any specific renovation, upgrade, split, merge, or deterioration of the unit.

Building Information

Number of units: 328
 Number of active listings for rent: 0
 Number of active listings for sale: 12
 Building inventory for sale: 3%
 Number of sales over the last 12 months: 9
 Number of sales over the last 6 months: 6
 Number of sales over the last 3 months: 3

Building Association Information

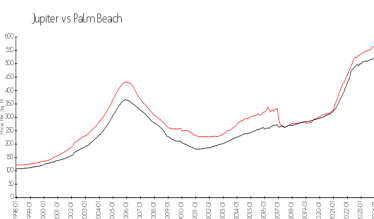
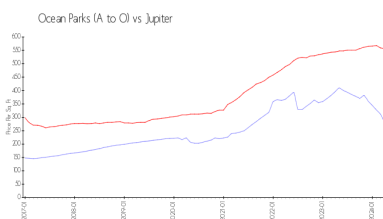
Ocean Parks Office
 300 N. Ocean Blvd (Hwy. A1A)
 Jupiter, FL 33477-9510
 (561) 744-0668
 (561) 575-2874 (fax)

<https://www.oceanparks.com/>

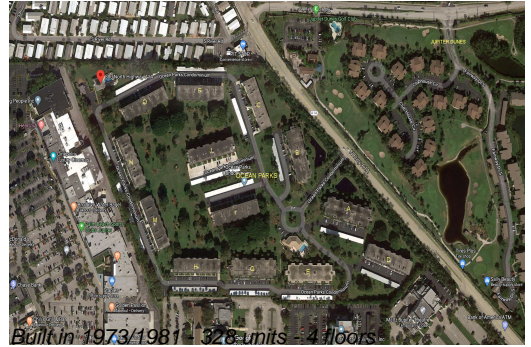
Recent Sales

Unit #	Size	Closing Date	Sale Price	PPSF
302m	1,520 sq ft	May 2024	\$380,000	\$250
103o	1,520 sq ft	Apr 2024	\$350,000	\$230
304f	1,520 sq ft	Mar 2024	\$475,000	\$313
102n	1,520 sq ft	Jan 2024	\$635,000	\$418
106n	1,936 sq ft	Dec 2023	\$795,500	\$411

Market Information



Ocean Parks (A to O): \$278/sq. ft.
 Jupiter: \$557/sq. ft.
 Jupiter: \$557/sq. ft.
 Palm Beach: \$475/sq. ft.



Inventory for Sale

Ocean Parks (A to O)	4%
Jupiter	3%
Palm Beach	3%

Avg. Time to Close Over Last 12 Months

Ocean Parks (A to O)	68 days
Jupiter	66 days
Palm Beach	56 days