

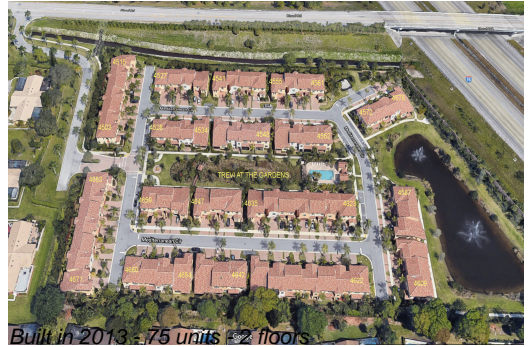
Unit 4576 Mediterranean Ct - Trevi at the Gardens

4576 Mediterranean Ct - 4503-4683 Mediterranean Cir, Palm Beach Gardens, FL, Palm Beach 33418

Unit Information

MLS Number: RX-10941612
 Status: Active
 Size: 2,251 Sq ft.
 Bedrooms: 3
 Full Bathrooms: 2
 Half Bathrooms: 1
 Parking Spaces: 2+ Spaces, Garage - Attached
 View: Lake, Pond
 List Price: \$579,000
 List PPSF: \$257
 Valuated Price: \$513,000
 Valuated PPSF: \$315

The above valuated price is a baseline figure that does not take into account any specific renovation, upgrade, split, merge, or deterioration of the unit.



Building Information

Number of units: 75
 Number of active listings for rent: 0
 Number of active listings for sale: 5
 Building inventory for sale: 6%
 Number of sales over the last 12 months: 3
 Number of sales over the last 6 months: 1
 Number of sales over the last 3 months: 1

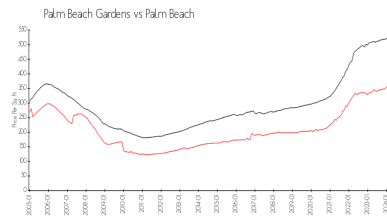
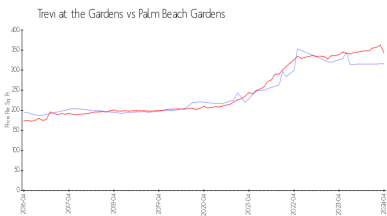
Building Association Information

Trevi at the Gardens HOA
 Address 4580 Mediterranean Cir
 Palm Beach Gardens, FL33418
 Phone +1 561-249-0489

Recent Sales

Unit #	Size	Closing Date	Sale Price	PPSF
	2,227 sq ft	May 2024	\$548,500	\$246
	2,387 sq ft	Jul 2023	\$540,000	\$226
	2,251 sq ft	Jun 2023	\$560,000	\$249

Market Information



Trevi at the Gardens: \$316/sq. ft. Palm Beach Gardens: \$342/sq. ft.
 Palm Beach Gardens: \$342/sq. ft. Palm Beach: \$475/sq. ft.

Inventory for Sale

Trevi at the Gardens: 7%
 Palm Beach Gardens: 2%

Palm Beach

3%

Avg. Time to Close Over Last 12 Months

Trevi at the Gardens	51 days
Palm Beach Gardens	47 days
Palm Beach	56 days