

# Unit 607 Mainsail Cir - Sea Colony

607 Mainsail Cir - 101-1909 Mainsail Cir, Jupiter, FL, Palm Beach 33477

## Unit Information

MLS Number:	RX-10962116
Status:	Active
Size:	1,950 Sq ft.
Bedrooms:	2
Full Bathrooms:	2
Half Bathrooms:	0
Parking Spaces:	Driveway, Garage - Attached, Guest
View:	Other, Preserve
List Price:	\$850,000
List PPSF:	\$436
Valuated Price:	\$816,000
Valuated PPSF:	\$504

The above valuated price is a baseline figure that does not take into account any specific renovation, upgrade, split, merge, or deterioration of the unit.

## Building Information

Number of units:	171
Number of active listings for rent:	0
Number of active listings for sale:	3
Building inventory for sale:	1%
Number of sales over the last 12 months:	5
Number of sales over the last 6 months:	4
Number of sales over the last 3 months:	3

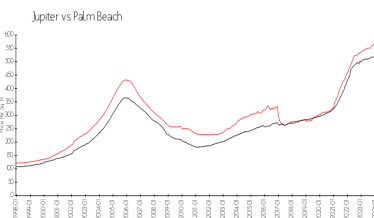
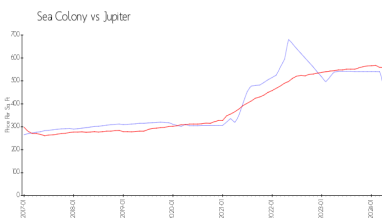
## Building Association Information

Sea Colony Community Association  
 Address: 1910 Mainsail Cir,  
 Jupiter, FL 33477  
 Phone: +1 561-743-5411

## Recent Sales

Unit #	Size	Closing Date	Sale Price	PPSF
1405	1,824 sq ft	Mar 2024	\$760,000	\$417
	1,624 sq ft	Mar 2024	\$827,000	\$509
1601	1,263 sq ft	Mar 2024	\$711,900	\$564
	1,624 sq ft	Jan 2024	\$950,000	\$585
	1,263 sq ft	Aug 2023	\$790,000	\$625

## Market Information

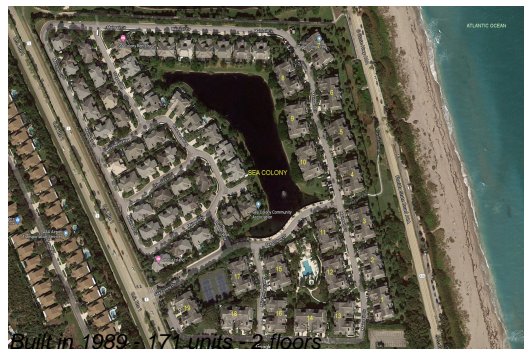


Sea Colony: \$465/sq. ft.  
 Jupiter: \$557/sq. ft.

Jupiter: \$557/sq. ft.  
 Palm Beach: \$475/sq. ft.

## Inventory for Sale

Sea Colony	2%
Jupiter	3%
Palm Beach	3%



## **Avg. Time to Close Over Last 12 Months**

Sea Colony	65 days
Jupiter	66 days
Palm Beach	56 days